

BM Spare Parts Quote List (SOLID CERAMIC PLUNGER PUMP)

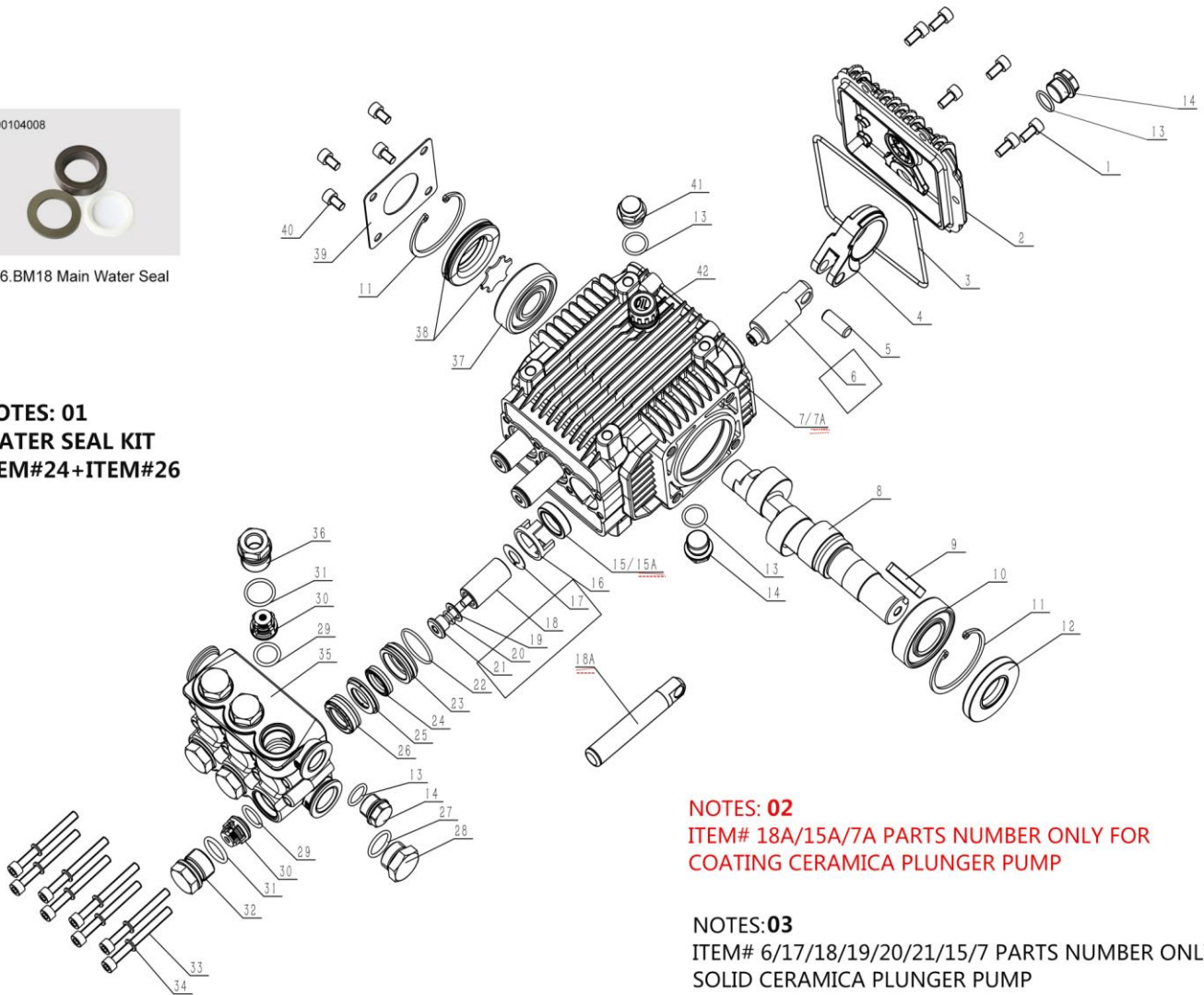
Issued By : TOR

Date updated : 28th, May. 2019



#26.BM18 Main Water Seal

NOTES: 01
WATER SEAL KIT
ITEM#24+ITEM#26



NOTES: 02
ITEM# 18A/15A/7A PARTS NUMBER ONLY FOR
COATING CERAMICA PLUNGER PUMP

NOTES:03
ITEM# 6/17/18/19/20/21/15/7 PARTS NUMBER ONLY FOR
SOLID CERAMICA PLUNGER PUMP

PARTS #		Parts Description	配件名称	QTY	Unit Price	TOT
BM -1	590201014	Hexagon screw	内六角圆头螺丝	6		
BM -2	301030101	BM Rear Cover	BM后盖组件	1		
BM -3	590101011	O-ring	O型圈110*3	1		
BM -4	500102200	BM Connecting Rod	BM连杆	3		
BM -5	500102240	BM Pin of plunger	BM柱塞销	3		
BM -6	500102100	BM plunger lever	BM20柱塞杆	3		
BM-7A	500102020	BM Crankcase-A	BM18曲轴箱	1		
BM -7	500102030	BM Crankcase	BM20曲轴箱	1		
BM -8	500102360	BM15litres Solid Crankshaft 24mm(Tor)	BM14- N24曲轴俄罗斯定制	1		
BM -8-1	500102430	BM05litres Solid Crankshaft 24mm	BM05-N24曲轴	1		
BM -8-2	500102500	BM07litres Solid Crankshaft 24mm	BM07-N24曲轴	1		
BM-9	500011001	flat key	平键	1		
BM -10	590302002	6205 Needle Bearing	深沟球轴承 6205	1		

BM -11	590205005	Circlip,52-A	孔用弹性挡圈	2		
BM -12	590108002	Crankshaft Oil Seal	TC骨架油封	1		
BM -13	590101019	O-ring	O型圈14*1.8	4		
BM -14	500010001	BM Dipstick Gap	堵头	3		
BM -15	590107003	Oil Seal - 20*28*7	TC4骨架油封20	3		
BM -15A	590107002	Oil Seal - 18*28*7	TC4骨架油封18			
BM -16	500102050	BM 18MM Oil Seal Bracket	BM20支撑架	3		
BM -17	500102150	BM WIPER	BM挡水片	3		
BM-18A	500102070	Ceramic coating plunger	18喷瓷柱塞	3		
BM -18	500102110	Solid Ceramic Tube	BM18陶瓷管	3		
BM -19	500102210	BM sheet gasket	BM密封垫片	3		
BM -20	590101105	O-ring	O型圈7.65*1.78	3		
BM -21	500102220	Locking bolt	BM陶瓷管锁紧螺栓	3		
BM -22	590101063	O-ring	O型圈26.7*1.78	3		
BM -23	500101050	BM18MM Guide Ring	BM18后导环	3		
BM -24	590105002	BM18 Aux. Water Seal	18副水封	3		
BM -25	500101080	BM Support Ring	BM18支撑环	3		
BM -26	590104008	BM18 Main Water Seal	主水封三件套	3		
BM -27	590101035	O-ring	O型圈17*2	1		
BM-28	500010002	BM 1/2 Plug	堵头	1		
BM-29	590101023	O-ring	O型圈15*2.4	6		
BM-30	500101150	BM Checkign Valve-A	BM单向阀A(7-19L/min)	6		
BM-31	590101042	O-ring	O型圈18*2.5	6		
BM-32	500101100	BM Valve Nut	BM单向阀螺丝	5		
BM-33	590201007	Hexagon screw	内六角圆头螺丝	8		
BM-34	590204102	Washer D6	双面齿垫	8		
BM-35	500101020	BM Cylinder	BM18泵头	1		
BM -36	500101110	BM Valve Nut9(with hole)	BM带孔单向阀螺丝	1		
BM -37	590302004	Ball Bearing 6304	深沟球轴承 6304	1		
BM -38	301210101	BM Side Oil Indicator	BM侧油镜组件	1		
BM -39	500102230	BM Side Plate	BM压板	1		
BM -40	590201016	Hexagon screw	内六角圆头螺丝	4		
BM -41	101702010	Oil plug	BM油塞	1		
BM -42	301150101	Oil leveler	BM油标	1		