



INTERPUMPGROUP

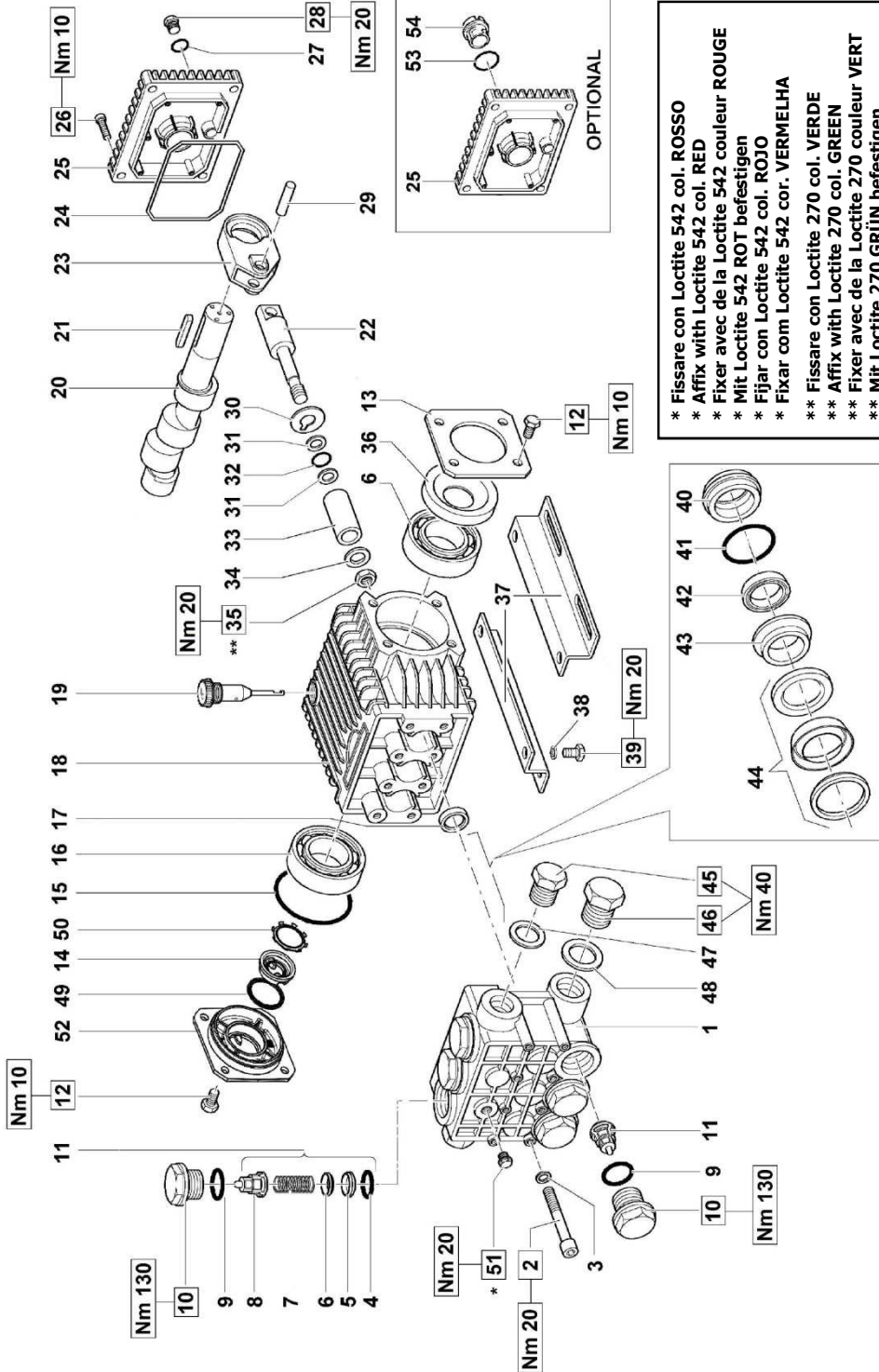
I GB	ISTRUZIONI D'USO INSTRUCTIONS FOR USE	F D	MODE D'EMPLOI BEDIENUNGSANLEITUNG	E P	INSTRUCCIONES DE USO INSTRUÇÕES DE USO
-----------------	--	----------------	--	----------------	---

Questo manuale deve essere letto e compreso in accordo al libretto generico "Istruzioni d'uso e manutenzione".
 This manual must be read and followed in accordance with the generic "Instructions for Use and Maintenance" booklet.
 Ce manuel doit être lu et compris en accord avec la notice générale " Mode d'emploi et d'entretien ".
 Dieses Handbuch ist in Verbindung mit dem allgemeinen Handbuch " Gebrauchs- und Wartungsanleitung " zu lesen und zu verstehen.
 Este manual debe leerse y comprenderse de acuerdo con el manual general "Instrucciones de uso y mantenimiento".
 Este manual deve ser lido e interpretado de acordo com o livro genérico "Instruções de uso e manutenção".



63	Type Type Type Tipo Tipo	Flow rate Débit Förderstrom Caudal Portata		Pressure Pressione Druck Presion Pressione			rpm t/m upm r/m g/m	Power Puissance Leistung Potencia Potenza		Weight Poids Gewicht Peso Massa		
		L/min	gpm	bar	MPa	psi		Hp	kW	Kg	Ibs	
S E R I E S	EL2002	2	0.53	200	20	2900	1450	1.1	0.81	8.15	18	0.37
	EL1403	3	0.80	140	14	2030	1450	1.1	0.81	8.05	17.7	0.37
	EL2007	7	1.85	200	20	2900	1450	3.7	2.72	8.15	18	0.37
	EL2009	9	2.38	200	20	2900	1450	4.7	3.45	8.15	18	0.37
	EL1411	11	2.90	140	14	2030	1450	4.0	2.94	8.05	17.7	0.37
	EL1713	13	3.43	170	17	2465	1450	5.8	4.26	8.05	17.7	0.37
	EL1714	14	3.69	170	17	2465	1450	6.2	4.56	8.05	17.7	0.37
	UL2009	9	2.38	200	20	2900	1750	4.7	3.45	8.15	18	0.37
	UL2011	11	2.90	200	20	2900	1750	5.8	4.26	8.15	18	0.37
	UL1413	13	3.43	138	13.8	2000	1750	4.7	3.45	8.05	17.7	0.37
	UL1715	15.2	4.02	170	17	2465	1750	6.7	4.92	8.05	17.7	0.37
	UL1716	16	4.22	170	17	2465	1750	7.1	5.22	8.05	17.7	0.37
	EH2009	9	2.38	200	20	2900	2800	4.7	3.45	8.15	18	0.37
	EH2011	11	2.90	200	20	2900	2800	5.8	4.26	8.15	18	0.37
	EH1413	13	3.43	140	14	2030	2800	4.8	3.52	8.15	18	0.37
	EH1416	16	4.22	140	14	2030	2800	5.8	4.26	8.15	18	0.37
	UH2008	8	2.11	200	20	2900	3400	4.2	3.08	8.15	18	0.37
	UH2011	11	2.90	200	20	2900	3400	5.8	4.26	8.15	18	0.37
	UH2013	13	3.43	200	20	2900	3400	6.8	5.00	8.15	18	0.37
	UH2014	14	3.69	200	20	2900	3400	7.3	5.37	8.15	18	0.37
UH2016	16	4.22	200	20	2900	3400	8.3	6.10	8.15	18	0.37	





- * Fissare con Loctite 542 col. ROSSO
- * Affix with Loctite 542 col. RED
- * Fixer avec de la Loctite 542 couleur ROUGE
- * Mit Loctite 542 ROT befestigen
- * Fijar con Loctite 542 col. ROJO
- * Fixar com Loctite 542 cor. VERMELHA
- ** Fissare con Loctite 270 col. VERDE
- ** Affix with Loctite 270 col. GREEN
- ** Fixer avec de la Loctite 270 couleur VERT
- ** Mit Loctite 270 GRÜN befestigen
- ** Fijar con Loctite 270 col. VERDE
- ** Fixar com Loctite 270 cor. VERDE

**EL2002 - EL2007 - EL2009 - EL1403
EL1411 - EL1713 - EL1714 - UL1413
UL1715 - UL1716 - UL2009 - UL2011
EH1413 - EH1416 - EH2009 - EH2011
UH2008 - UH2011 - UH2013 - UH2016**

KIT RICAMBI - SPARE KITS

KIT RICAMBI - SPARE KITS						PISTONE - PISTON D. 15				PISTONE - PISTON D. 18			
KIT Nr.	KIT 123	KIT 124	KIT 159	KIT 160	KIT 162	KIT 164	KIT 166	KIT 161	KIT 163	KIT 165	KIT 167		
Posizioni include Positions included (11)	4 - 5 6 - 7 8	9 - 10	17	42 - 44	40	43	40 - 41 42 - 43 44	42 - 44	40	43	40 - 41 42 - 43 44		
Nr. Pcs.	6	6	6	3	3	3	1	3	3	3	1		

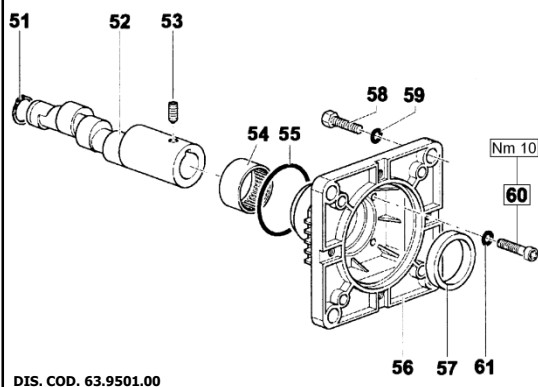
PISTONE - PISTON D. 15		PISTONE - PISTON D. 18	
EL2002 - EL2007 - EL2009 - UL2009 UL2011 - EH1413 - EH1416 - EH2009 EH2011 - UH2008 - UH2011 - UH2013 - UH2016	EL1403 - EL1411 - EL1713 EL1714 - UL1413 - UL1715 UL1716		

POS	COD.	DESCRIZIONE - DESCRIPTION - KIT	NR	POS	COD.	DESCRIZIONE - DESCRIPTION - KIT	NR
19	98.2103.00	Tappo carico olio G 3/8"x51	1	37	50.2000.74	Piedino pompa	2
	63.0202.65	Albero ecc. C.5.0 - UH2008		38	96.7016.00	Rosetta D. 8.4x14.4x2.0	4
	63.0205.65	Albero ecc. C.5.5 - EH2009 UH2011		39	99.3037.00	Vite M8x16 UNI 5739	4
	63.0208.65	Albero ecc. C.8.0 - EH2011 UH2013		40	63.0800.70	Anello di fondo D. 15	162-166
20	63.0212.35	Albero ecc. C.10.0 - EL2007 EL1411 UL2009 UL1413 EH1413 UH2016	1	41	63.0801.70	Anello di fondo D. 18	163-167
	63.0216.35	Albero ecc. C.12 - EL2009 EL1713 UL2011 UL1715 EH1416			90.3608.00	OR D. 28.30x1.78 NBR 70SH 2112 166-167	3
	63.0218.35	Albero ecc. C.13 - EL1714					
21	91.4892.00	Linguetta 8.0x7.0x35.0	1	42	90.2608.00	Anello ten. alt. D. 15x22x5 LP 160-166	3
22	63.0500.66	Guida pistone	3		90.2650.00	Anello ten. alt. D. 18x24x5 LP 161-167	
23	63.0300.22	Biella	3	43	63.2160.70	Anello intermedio D. 15	164-166
24	90.3920.00	OR D.101.27x2.62 NBR 70SH 3400	1		63.2161.70	Anello intermedio D. 18	165-167
25	63.1600.22	Coperchio posteriore - OPTIONAL	1	44	90.2612.00	An. ten. alt. D. 15x24x8.5 HP 160-166	3
	63.1601.22	Coperchio posteriore			90.2654.00	An. ten. alt. D. 18x28x10 HP 161-167	
26	99.1837.00	Vite M6x14 UNI 5931	4	45	98.2100.00	Tappo G 3/8"x13	1
27	90.3585.00	OR D. 10.82x1.78 NBR 70SH 2043	1	46	98.2176.00	Tappo G 1/2"x10	1
28	98.2042.50	Tappo G 1/4"x9 TE17 Zinc.	1	47	96.7380.00	Rosetta D. 17.5x23.0x1.5	1
29	97.7335.00	Spinotto D. 9x27.5	3	48	96.7514.00	Rosetta D. 21.15x27.0x1.5	1
30	96.7075.00	Rosetta D. 9.0x25.0x0.5	3	49	90.3859.00	OR D. 25.07x2.62 NBR 70SH 3100	1
31	90.5022.00	Anello antiest. D. 6.2x9.0x1.5	3	50	90.0671.00	Anello d'arresto ZJ30	1
32	90.3573.00	OR D. 5.28x1.78 NBR 70SH 2021	3	51	98.2041.00	Tappo G 1/4"x9	1
33	52.0400.09	Pistone D. 15	3	52	53.1500.22	Coperchio laterale carter	1
	44.0401.09	Pistone D. 18		53	90.4051.00	OR D. 26.58x3.53 NBR 70SH 4106 OPTIONAL	1
34	44.2115.70	Rosetta con collare D. 8	3	54	63.2100.51	Spia livello olio - OPTIONAL	1
35	92.2216.00	Dado M8x13x5	3				
36	90.1641.00	Anello rad. D. 25.0x65.0x10.0	1				

POS	COD.	DESCRIZIONE - DESCRIPTION - KIT	NR
1	63.1200.41	Testata pompa D. 15	1
	63.1203.41	Testata pompa D. 18	
2	99.3192.00	Vite M8x65 UNI 5931	8
3	96.7014.00	Rosetta D. 8.4x13.0x0.8	8
4	90.3841.00	OR D. 17.13x2.62 NBR 70SH 3068 123	6
5	36.2003.66	Sede valvola	123
6	36.2001.76	Valvola	123
7	94.7376.00	Molla Dm. 9.4x14.8	123
8	36.2025.51	Guida valvola	123
9	90.3847.00	OR D. 20.29x2.62 NBR 90SH 3081 124	6
10	98.2226.00	Tappo M24x17x1.5	124
11	36.7115.01	Gr. valvola aspirazione / mandata 123	6
12	99.1807.00	Vite M6x10 UNI 5739	8
13	50.1500.74	Coperchio laterale carter	1
14	53.2108.51	Vetrino spia livello olio	1
15	90.3898.00	OR D. 56.82x2.62 NBR 70SH 3225	1
16	91.8331.00	Cuscinetto a sfera	2
17	90.1595.00	Anello rad. D. 18.0x26.0x6.0	159
18	63.0100.22	Carter pompa	1

VERSION A (for electric motors NEMA 184 TC)

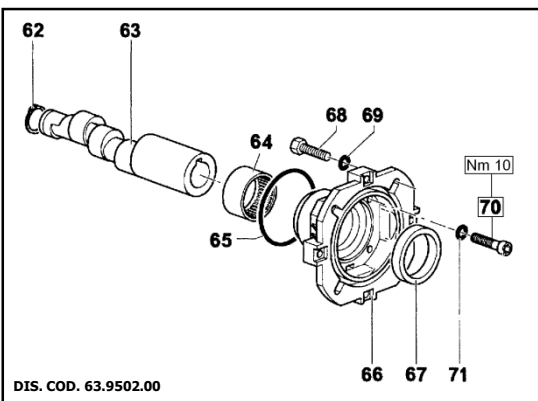
UL1413 – UL1715 – UL2009 – UL2011



POS	COD.	DESCRIZIONE - DESCRIPTION	NR
51	90.0635.00	Anello di fermo Ø 25 UNI 7435	1
52	63.0232.65 63.0236.65	Albero C. 10 – UL2009 UL1413 Albero C. 12 – UL2011 UL1715	1 1
53	99.1790.00	Vite M6x6 UNI 5929	1
54	91.8568.00	Boccola a rullini	1
55	90.4097.00	OR Ø 55.56x3.56 (159)	1
56	10.0504.22	Flangia per motore elettrico	1
57	90.1690.00	Anello rad. Ø 45x62x8	1
58	99.4600.00	Vite 1/2"x1-1/4"	4
59	96.7195.00	Rosetta Ø 13x18x1.1	4
60	99.1912.00	Vite M6x30 UNI 5931	4
61	96.6938.00	Rosetta Ø 6.4x10x0.7	4

VERSION B (for electric motors IEC 100-112 B14)

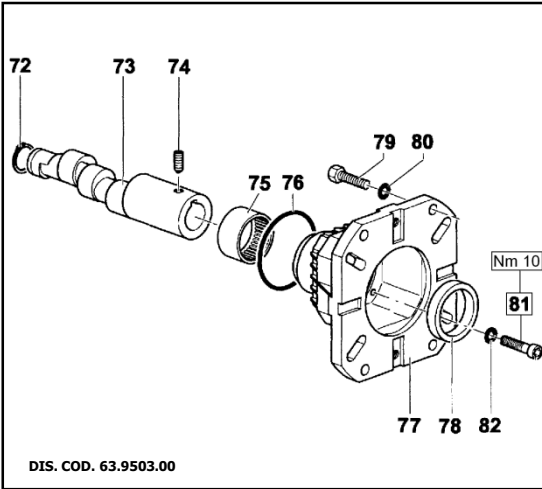
EH1413 – EH1416 – EH2009 – EH2011 EL2002 – EL1403 - EL1411 – EL1713 EL2007 – EL2009 – EL1714



POS	COD.	DESCRIZIONE - DESCRIPTION	NR
62	90.0635.00	Anello di fermo Ø 25 UNI 7435	1
63	63.0239.65 63.0245.65 63.0248.65 63.0252.65 63.0256.65 63.0295.65	Albero C.3.5 – EL2002 EL1403 Albero C.6.5 – EH2009 Albero C.8 – EH2011 Albero C.10 – EL2007 EL1411 EH1413 Albero C.12 – EL2009 EL1713 EH1416 Albero C.13 – EL1714	1
64	91.8568.00	Boccola a rullini	1
65	90.4097.00	OR Ø 55.56x3.56 (159)	1
66	10.0494.22	Flangia per motore elettrico	1
67	90.1690.00	Anello rad. Ø 45x62x8	1
68	99.3067.00	Vite M8x25 UNI 5739	4
69	96.7014.00	Rosetta Ø 8.4x13x0.8	4
70	99.1912.00	Vite M6x30 UNI 5931	4
71	96.6938.00	Rosetta Ø 6.4x10x0.7	4

VERSION C1" (for gasoline engines SAE J 609 type B ext.4)

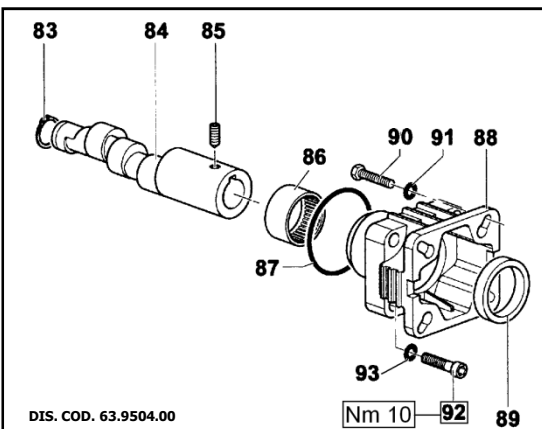
UH2011 – UH2013 – UH2014 – UH2016



POS	COD.	DESCRIZIONE - DESCRIPTION	NR
72	90.0635.00	Anello di fermo Ø 25 UNI 7435	1
73	63.0277.65	Albero C.6.5 – UH2011	1
	63.0280.65	Albero C.8 – UH2013	1
	63.0282.65	Albero C.9 – UH2014	1
	63.0284.65	Albero C.10 – UH2016	1
74	99.1790.00	Vite M6x6 UNI 5929	1
75	91.8568.00	Boccola a rullini	1
76	90.4097.00	OR Ø 55.56x3.56 (159)	1
77	10.0518.22	Flangia per motore a scoppio	1
78	90.1690.00	Anello rad. Ø 45x62x8	1
79	99.2755.00	Vite 5/16"x1"	4
	99.3346.00	Vite 3/8"x1"-1/4	4
80	96.7020.00	Rosetta Ø 8.4x15x1.5 UNI 1736	4
	96.7104.00	Rosetta Ø 10.5x16x1	4
81	99.1912.00	Vite M6x30 UNI 5931	4
82	96.6938.00	Rosetta Ø 6.4x10x0.7	4

VERSION C3/4" (for gasoline engines SAE J 609 type A ext.3)

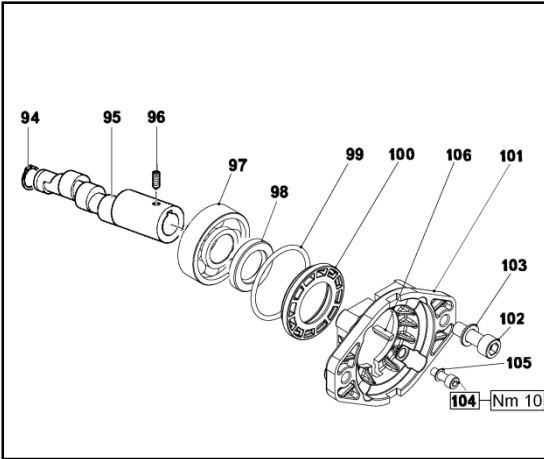
UH2008 – UH2011 – UH2013



POS	COD.	DESCRIZIONE - DESCRIPTION	NR
83	90.0635.00	Anello di fermo Ø 25 UNI 7435	1
84	63.0262.65	Albero C.5 – UH2008	1
	63.0264.65	Albero C.6.5 – UH2011	1
	63.0266.65	Albero C.8 – UH2013	1
85	99.1790.00	Vite M6x6 UNI 5929	1
86	91.8568.00	Boccola a rullini	1
87	90.4097.00	OR Ø 55.56x3.56 (159)	1
88	10.0617.22	Flangia per motore a scoppio	1
89	90.1687.00	Anello rad. Ø 45x60x8	1
90	99.2730.00	Vite 5/16"x3/4"x24	4
91	96.7014.00	Rosetta Ø 8.4x13 0.8	4
92	99.1912.00	Vite M6x30 UNI 5931	4
93	96.6938.00	Rosetta Ø 6.4x10x0.7	4

VERSION I (for hydraulic motors SAE J 744 type A – 5/8")

UL1716



POS	COD.	DESCRIZIONE - DESCRIPTION	NR
94	90.0635.00	Anello di fermo Ø 25 UNI 7435	1
95	63.0237.65	Albero C.12.5 – UL1716	1
96	99.1790.00	Vite M6x6 UNI 5929	1
97	91.8371.00	Cuscinetto a sfere 6206	1
98	90.1644.00	Anello rad. Ø 30x42x7	1
99	90.4097.00	OR Ø 55.56x3.56 (159)	1
100	50.2115.51	Distanziale	1
101	10.0763.22	Flangia per motore idraulico	1
102	99.3686.00	Vite M10x30 UNI 5931	2
103	96.7103.00	Rosetta Ø 10.5x18x2	2
104	99.1868.00	Vite M6x18 UNI 5931	4
105	96.6938.00	Rosetta Ø 6.4x10x0.7	4
105	91.4685.00	Linguetta 4/4.8x18	1

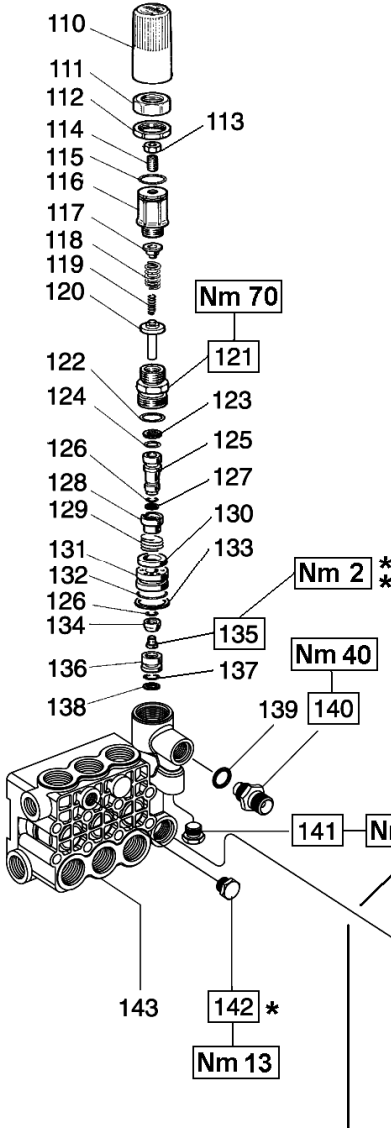
VH VERSION

VERSIONE CON VALVOLA DI REGOLAZIONE AUT. – VERSION WITH BUILT-IN AUT. UNLOADER
 VERSION AVEC RÉGULATEUR AUT. DE PRESSION INCORPORÉ
 AUSFÜHRUNG MIT EINGEBAUTEM AUT. DRUCKREGULIERVENTIL

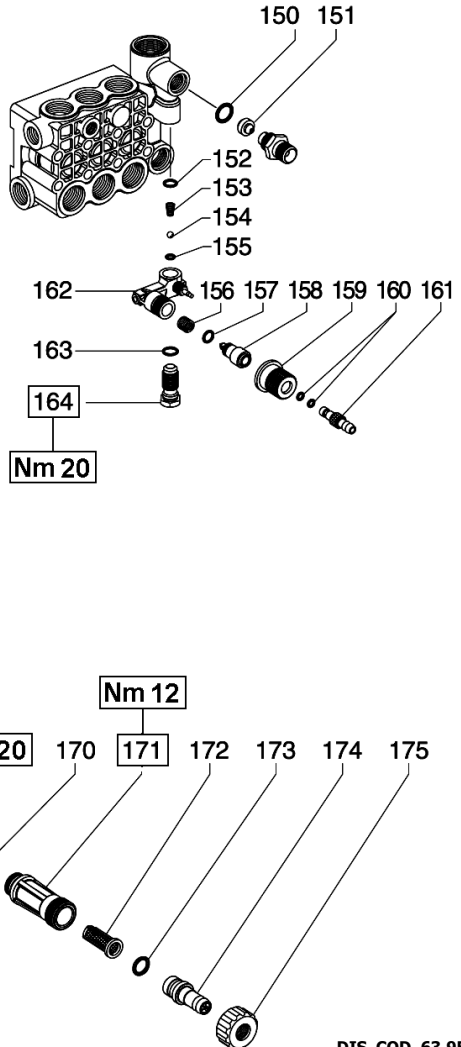
VERSIÓN CON REGULADOR AUT. DE PRESIÓN INCORPORADO - VERSÃO COM VÁLVULA DO REGULAMENTO AUT.

- * Fissare con Loctite 542 col. ROSSO
- * Affix with Loctite 542 col. RED
- * Fixer avec de la Loctite 542 couleur ROUGE
- * Mit Loctite 542 ROT befestigen
- * Fijar con Loctite 542 col. ROJO
- * Fixar com Loctite 542 cor. VERMELHA

- ** Fissare con Loctite 270 col. VERDE
- ** Affix with Loctite 270 col. GREEN
- ** Fixer avec de la Loctite 270 couleur VERT
- ** Mit Loctite 270 GRÜN befestigen
- ** Fijar con Loctite 270 col. VERDE
- ** Fixar com Loctite 270 cor. VERDE



OPTIONALS



DIS. COD. 63.9505.00

VH VERSION

VERSIONE CON VALVOLA DI REGOLAZIONE AUT. – VERSION WITH BUILT-IN AUT. UNLOADER
VERSION AVEC RÉGULATEUR AUT. DE PRESSION INCORPORÉ
AUSFÜHRUNG MIT EINGEBAUTEM AUT. DRUCKREGULIERVENTIL
VERSIÓN CON REGULADOR AUT. DE PRESIÓN INCORPORADO - VERSÃO COM VÁLVULA DO REGULAMENTO AUT.

POS	COD.	DESCRIZIONE – DESCRIPTION - KIT	N
110	36.3187.51	Pomolo	1
111	36.3186.70	Ghiera di registro pressione	1
112	92.2935.00	Dado M28x1.5	1
113	92.2218.00	Dado M8x13 UNI 5589	1
114	99.3054.00	Vite M8x20 UNI 5923	1
115	90.3598.00	OR Ø 20.35x1.78 (2081)	1
116	36.3185.70	Registro pressione	1
117	36.3169.70	Piattello molla	1
118	94.7436.00	Molla Ø 15x35	1
119	94.7345.00	Molla Ø 7.6x29	1
120	36.3233.70	Piattello inferiore molla	1
121	36.3228.70	Boccola di guida	1
122	90.3857.00	OR Ø 23.81x2.62 (132)	1
123	90.5052.00	Anello antiest. Ø 9.3x14x1.5	137 1
124	90.3820.00	OR Ø 9.13x2.62 (109) – Spec.	137 1
125	36.3234.70	Pistoncino di comando	137 1
126	90.3575.00	OR Ø 6.75x1.78 (106) – Spec.	137 2
127	90.5025.00	Anello antiest. Ø 7x10x1.5	137 1
128	36.3230.70	Distanziale	137 1
129	94.7485.00	Molla Ø 18.5x11	137 1
130	36.3231.51	Valvola	137 1
131	36.3229.70	Guida valvola	137 1
132	90.3600.00	OR Ø 21.95x1.78 (2087)	137 1
133	90.5144.00	Anello antiest. Ø 22x25x1.5	137 1
134	36.3190.66	Valvola sferica	137 1
135	99.1509.00	Vite M5x8.5x0.5 - INOX	137 1
136	36.3164.66	Sede valvola	137 1
137	90.3822.00	OR Ø 9.92x2.62 (112) – Spec.	137 1
138	90.5065.00	Anello antiest. Ø 10.6x15x2	137 1
139	90.3832.00	OR Ø 13.95x2.62 (3056) – Spec.	94 1
140	10.0078.70 10.0147.70	Nipplo G 3/8" con Ø 3 Nipplo M22x1.5 con Ø 3	1 1
141	98.2057.00	Tappo M14x1.5	1

POS	COD.	DESCRIZIONE – DESCRIPTION - KIT	N
142	98.2041.00	Tappo G 1/4"x9	1
143	63.1201.41 63.1204.41	Testata Ø 15 Testata Ø 18	1 1
OPTIONALS			
POS	COD.	DESCRIZIONE – DESCRIPTION - KIT	N
150	90.3822.00	OR Ø 9.92x2.62 (112) – Spec.	94 1
151	10.0437.70 10.0151.66 10.0076.66	Ugello – Nozzle D.1.6 (<8 l/min.) Ugello – Nozzle D.2 (8÷11 l/min.) Ugello – Nozzle D.2.2 (12÷17 l/min.)	1 1 1
152	90.3582.00	OR Ø 9.25x1.78 (2037)	94 1
153	94.8217.00	Molla conica Ø 4.3/7.3x11	94 1
154	97.4782.00	Sfera Ø 7/32"	94 1
155	90.3572.00	OR Ø 5.28x1.78 (2021) – Spec.	94 1
156	94.7383.00	Molla Ø 9.75x10	94 1
157	90.3580.00	OR Ø 8.73x1.78 (108) – Spec.	94 1
158	36.2564.70	Otturatore	1
159	36.2565.51	Pomolo	1
160	90.3570.00	OR Ø 4.48x1.78 (2018)	94 2
161	36.2566.70	Innesto portagomma	1
162	36.3181.51	Corpo dosatore	1
163	90.3585.00	OR Ø 10.82x1.78 (2043)	94 1
164	36.2563.70	Sede valvola	1
170	90.3841.00	OR Ø 17.13x2.62 (3068)	1
171	36.3182.51	Nipplo aspirazione G 3/4"	1
172	92.8925.00	Filtro	1
173	90.3828.00	OR Ø 12.37x2.62 (3050)	1
174	36.2569.51	Portagomma aspirazione	1
175	92.9828.00	Ghiera G 3/4"	1

KIT RICAMBI – SPARE KITS

KIT NR.	KIT 94	KIT 137
Posizioni include Positions included	139 – 150 – 152 153 – 154 – 155 156 – 157 – 160 163	123 – 124 – 125 126 – 127 – 128 129 – 130 – 131 132 – 133 – 134 135 – 136 – 137 138
Nr. Pcs.	1	1

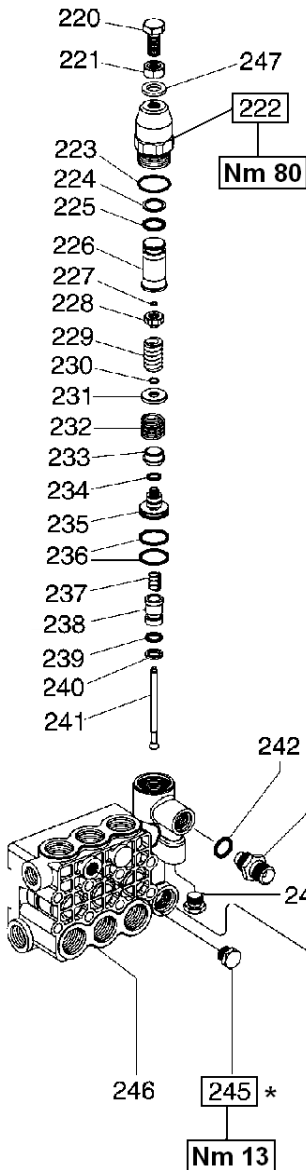
VK VERSION

VERSIONE CON VALVOLA DI REGOLAZIONE AUT. – VERSION WITH BUILT-IN AUT. UNLOADER
 VERSION AVEC RÉGULATEUR AUT. DE PRESSION INCORPORÉ
 AUSFÜHRUNG MIT EINGEBAUTEM AUT. DRUCKREGULIERVENTIL

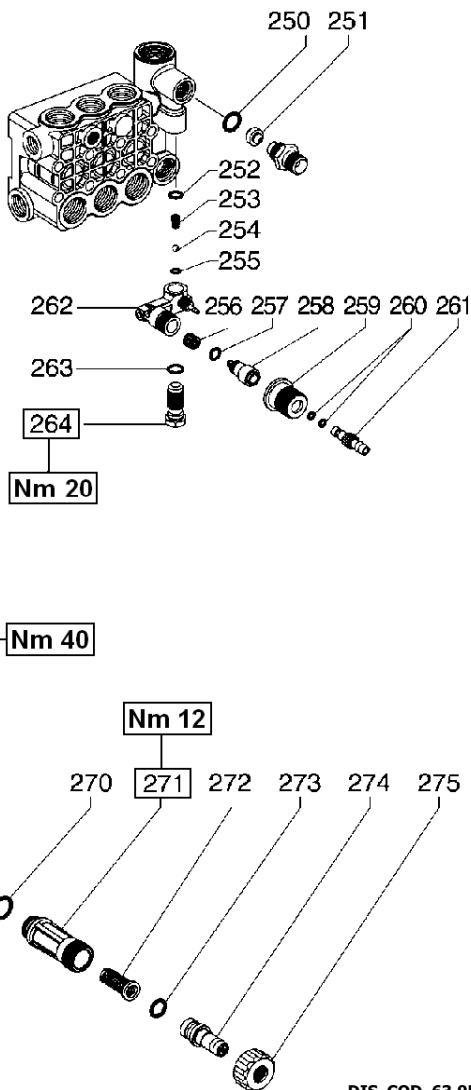
VERSIÓN CON REGULADOR AUT. DE PRESIÓN INCORPORADO - VERSÃO COM VÁLVULA DO REGULAMENTO AUT.

- * Fissare con Loctite 542 col. ROSSO
- * Affix with Loctite 542 col. RED
- * Fixer avec de la Loctite 542 couleur ROUGE

- * Mit Loctite 542 ROT befestigen
- * Fijar con Loctite 542 col. ROJO
- * Fixar com Loctite 542 cor. VERMELHA



OPTIONALS



DIS. COD. 63.9506.00

VK VERSION

**VERSIONE CON VALVOLA DI REGOLAZIONE AUT. – VERSION WITH BUILT-IN AUT. UNLOADER
VERSION AVEC RÉGULATEUR AUT. DE PRESSION INCORPORÉ
AUSFÜHRUNG MIT EINGEBAUTEM AUT. DRUCKREGULIERVENTIL**

VERSIÓN CON REGULADOR AUT. DE PRESIÓN INCORPORADO - VERSÃO COM VÁLVULA DO REGULAMENTO AUT.

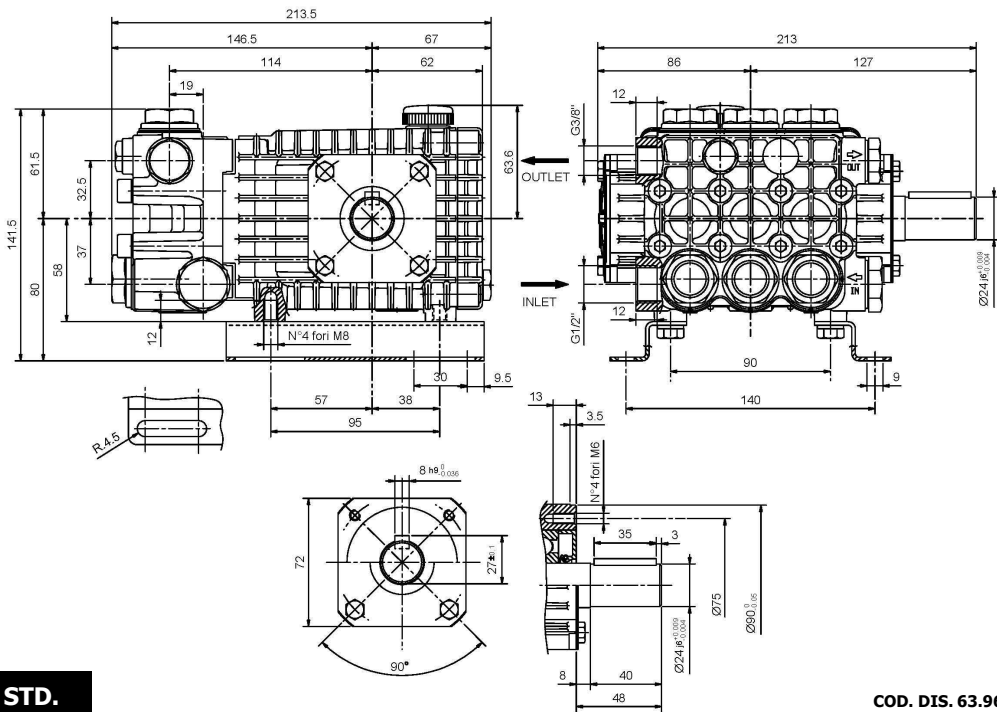
POS	COD.	DESCRIZIONE – DESCRIPTION - KIT	N
220	99.3663.00	Vite M10x1.25x25 UNI 5740	1
221	92.2368.00	Dado M10x1.25x17 UNI 5589	1
222	36.3270.70	Corpo superiore	1
223	90.3604.00	OR Ø 25.12x1.78 (2100)	1
224	90.5090.00	Anello antiest. Ø 15.8x20x1.3	1
225	90.3835.00	OR Ø 15.08x2.62 (119)	1
226	36.3271.70	Fine corsa	1
227	90.0059.00	Anello di arresto Ø 5 UNI 7433	177 1
228	36.3274.70	Piattello molla	177 1
229	94.7408.00	Molla Ø 12.5x26	177 1
230	90.0062.00	Anello di arresto Ø 8 UNI 7433	177 1
231	36.3273.70	Piattello molla	177 1
232	94.7480.00	Molla Ø 18.2x16.5	177 1
233	36.3277.56	Otturatore	177 1
234	90.3581.00	OR Ø 8.73x1.78 (108)	177 1
235	36.3272.70	Pistoncino di comando	177 1
236	92.7710.00	Fascia elastica Ø 25	177 2
237	94.7372.00	Molla Ø 9.3x15	177 1
238	36.3276.66	Sede valvola	177 1
239	90.3823.00	OR Ø 9.92x2.62 (112)	177 1
240	90.5065.00	Anello antiest. Ø 10.6x15x2	177 1
241	36.3275.66	Asta valvola	177 1
242	90.3832.00	OR Ø 13.95x2.62 (3056) – Spec.	94 1
243	10.0078.70 10.0147.70	Nipplo G 3/8" con Ø 8 Nipplo M22x1.5 con Ø 8	1 1
244	98.2057.00	Tappo M14x1.5	1
245	98.2041.00	Tappo G 1/4"x9	1
246	63.1201.41 63.1204.41	Testata Ø 15 Testata Ø 18	1 1
247	96.7103.00	Rosetta Ø 10.5x18x2	1

OPTIONALS			
POS	COD.	DESCRIZIONE – DESCRIPTION - KIT	N
250	90.3822.00	OR Ø 9.92x2.62 (112)	94 1
251	10.0437.70 10.0151.66 10.0076.66	Ugello D.1.6 (<8 l/min.) Ugello D.2 (8-11 l/min.) Ugello D:2.2 (12-15 l/min.)	1 1 1
252	90.3582.00	OR Ø 9.25x1.78 (2037)	94 1
253	94.8217.00	Molla conica Ø 4.3/7.6x11	94 1
254	97.4782.00	Sfera Ø 7/32"	94 1
255	90.3572.00	OR Ø 5.28x1.78 (2021)	94 1
256	94.7383.00	Molla Ø 9.75x10	94 1
257	90.3580.00	OR Ø 8.73x1.78 (108)	94 1
258	36.2564.70	Otturatore	1
259	36.2565.51	Pomolo	1
260	90.3570.00	OR Ø 4.48x1.78 (2018)	94 2
261	36.2566.70	Innesto portagomma	1
262	36.3181.51	Corpo dosatore	1
263	90.3585.00	OR Ø 10.82x1.78 (2043)	94 1
264	36.2563.70	Sede valvola	1
270	90.3841.00	OR Ø 17.13x2.62 (3068)	1
271	36.3182.51	Nipplo aspirazione G 3/4"	1
272	92.8925.00	Filtro	1
273	90.3828.00	OR Ø 12.37x2.62 (3050)	1
274	36.2569.70	Portagomma aspirazione	1
275	92.9828.00	Ghiera G 3/4"	1

KIT RICAMBI – SPARE KITS

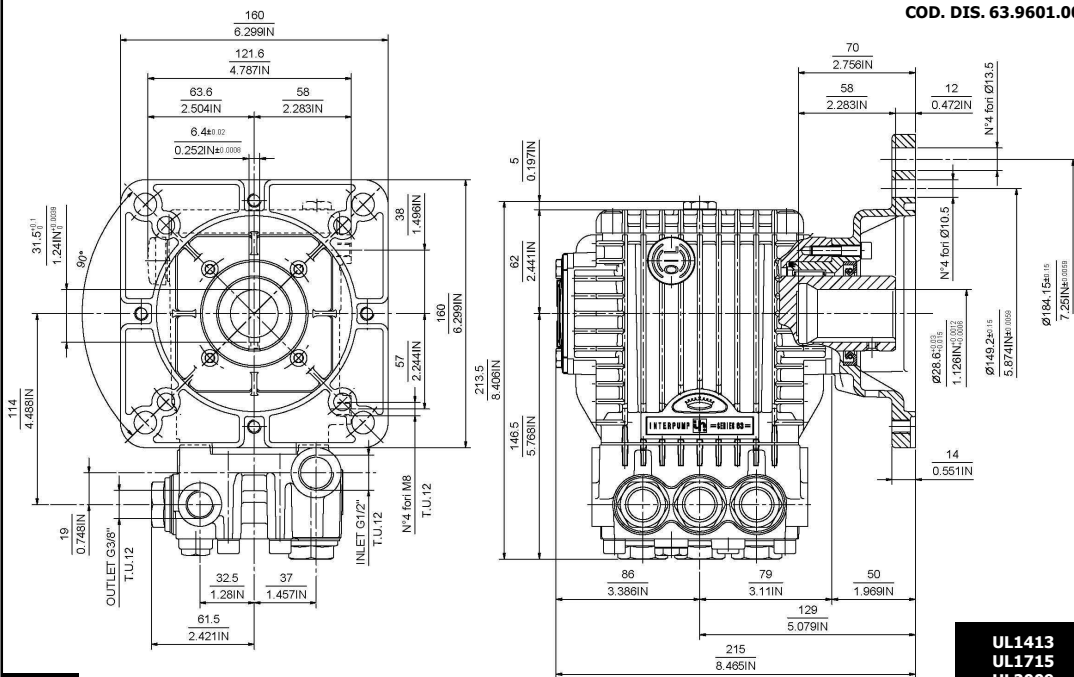
KIT NR.	KIT 94	KIT 177
Posizioni incluse Positions included	242 – 250 – 252 253 – 254 – 255 256 – 257 – 260 263	227 – 228 – 229 230 – 231 – 232 233 – 234 – 235 236 – 237 – 238 239 – 240 – 241
Nr. Pcs.	1	1

**DIMENSIONI D'INGOMBRO – OVERALL DIMENSIONS – DIMENSIONS D'ENCOMBREMENT
RAUMBEDARF – DIMENSIONES TOTALES – DIMENSÕES**



STD.

COD. DIS. 63.9600.00



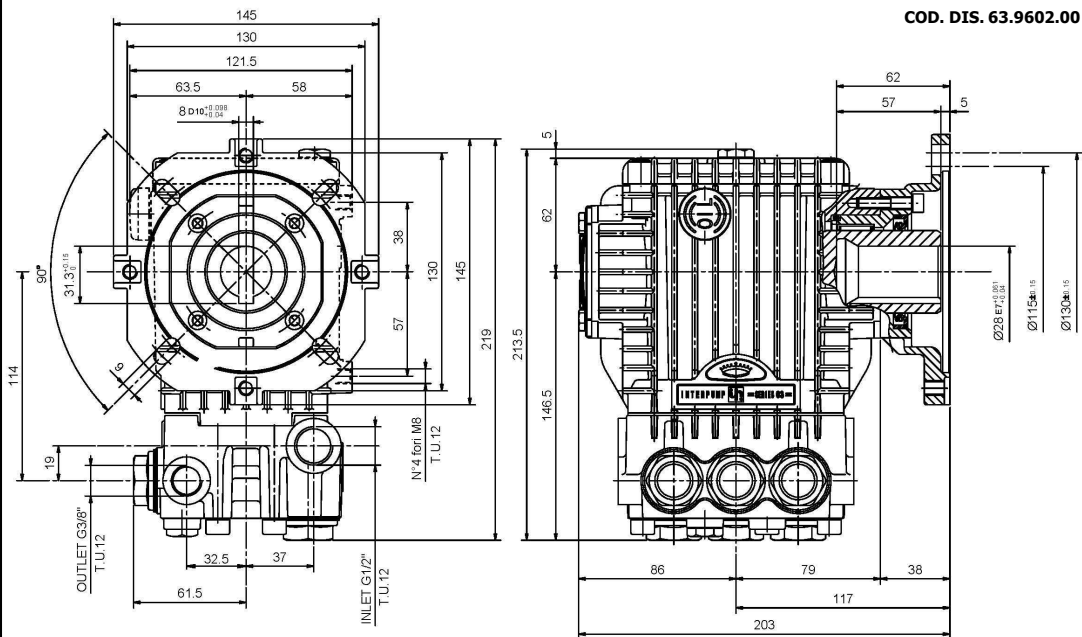
COD. DIS. 63.9601.00

A

**UL1413
UL1715
UL2009
UL2011**

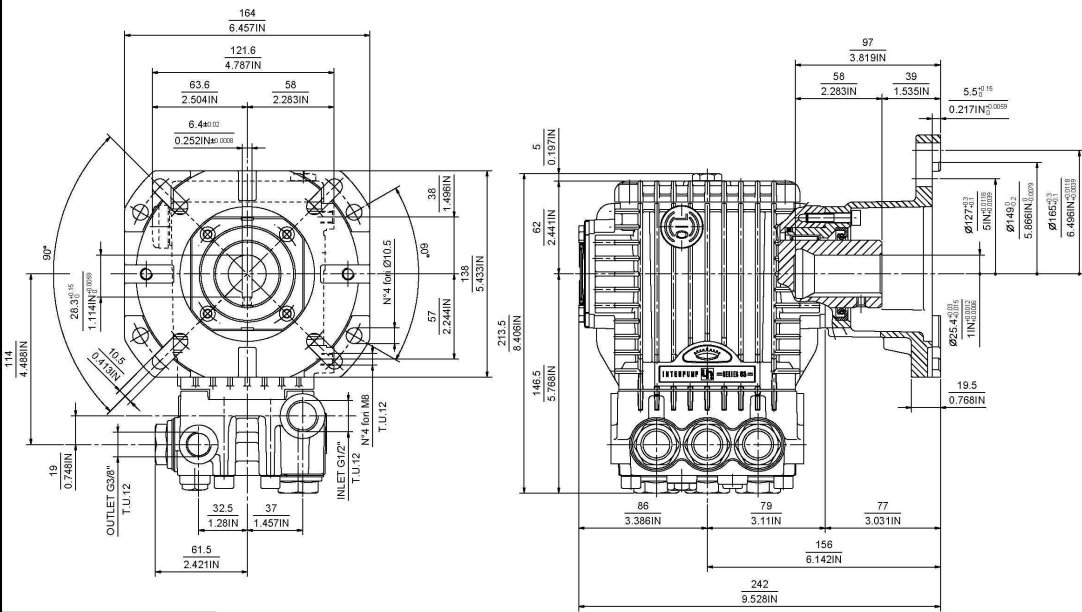
**DIMENSIONI D'INGOMBRO – OVERALL DIMENSIONS – DIMENSIONS D'ENCOMBREMENT
RAUMBEDARF – DIMENSIONES TOTALES – DIMENSÕES**

COD. DIS. 63.9602.00



**EH1413 - EH1416 - EH2009 - EH2011
EL1403 - EL1411 - EL1713 - EL2002
EL2007 - EL2009 - EL1714**

**B
C 1"**

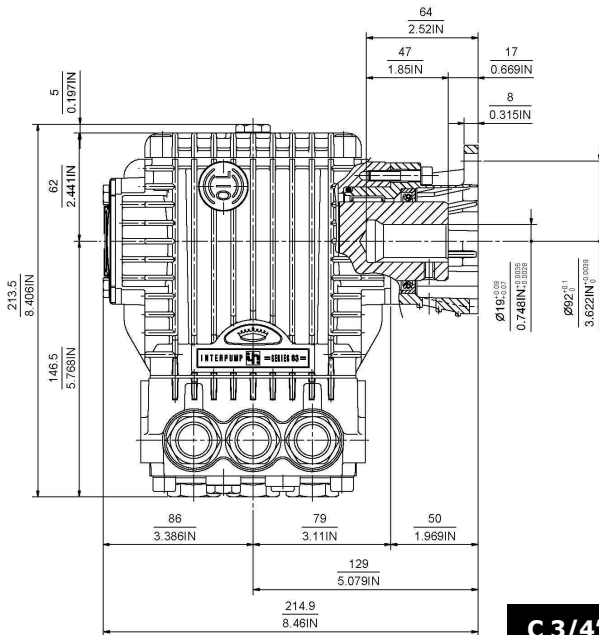
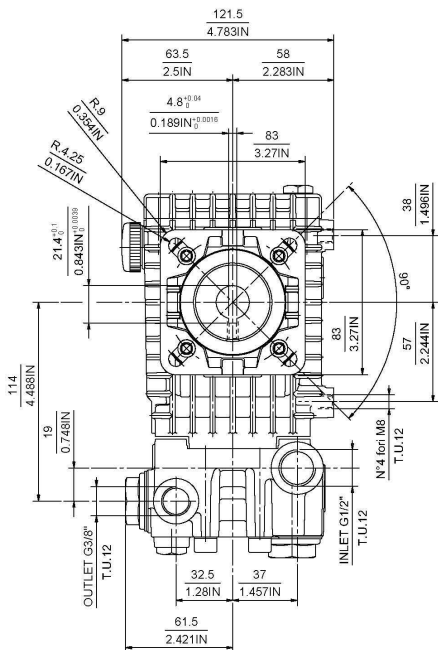


**UH2011 - UH2013
UH2014 - UH2016**

COD. DIS. 63.9603.00

**DIMENSIONI D'INGOMBRO – OVERALL DIMENSIONS – DIMENSIONS D'ENCOMBREMENT
RAUMBEDARF – DIMENSIONES TOTALES – DIMENSÕES**

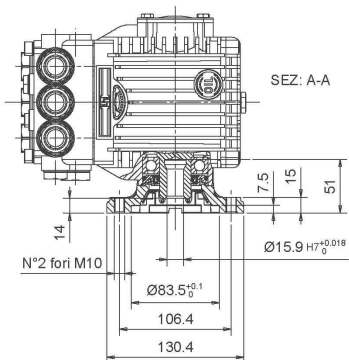
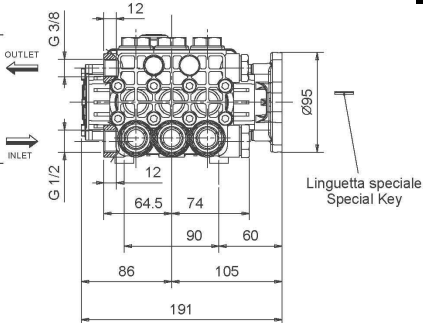
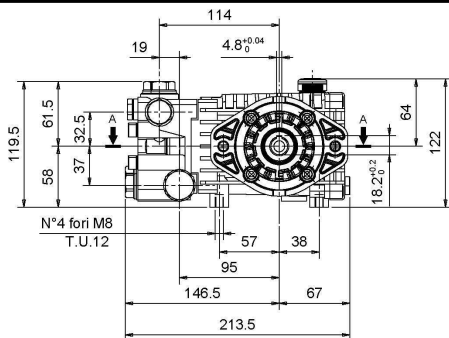
COD. DIS. 63.9604.00



UH2008 - UH2011 - UH2013

C 3/4"

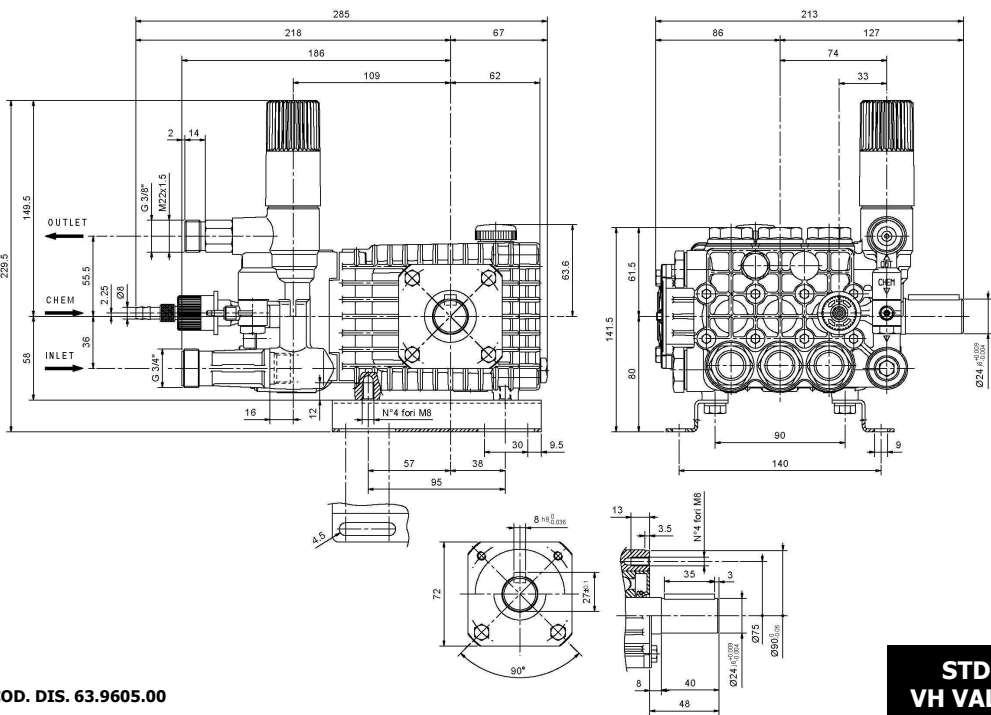
I



UL1716

COD. DIS. 63.9620.00

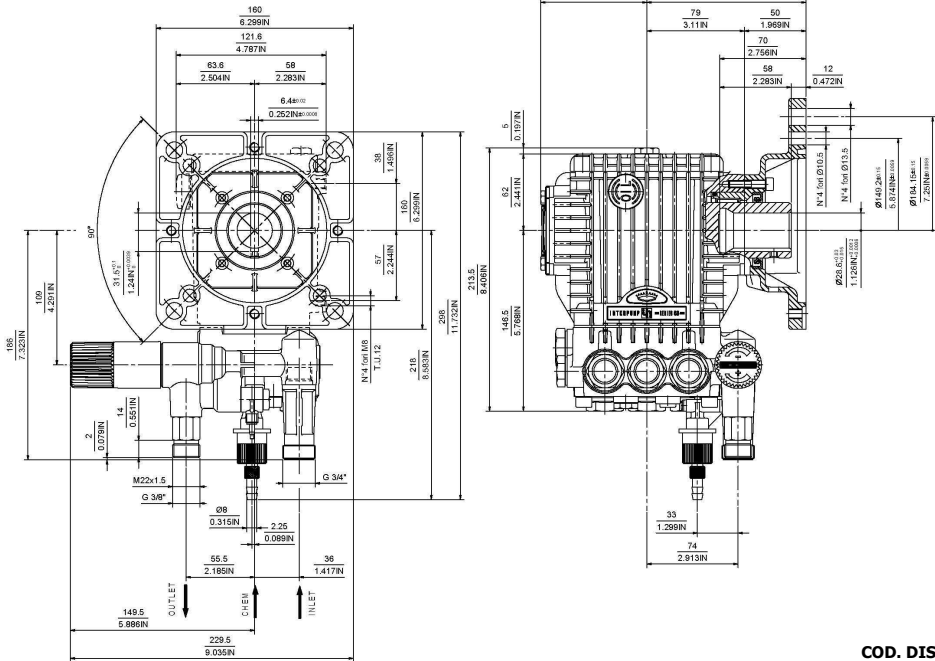
**DIMENSIONI D'INGOMBRO – OVERALL DIMENSIONS – DIMENSIONS D'ENCOMBREMENT
RAUMBEDARF – DIMENSIONES TOTALES – DIMENSÕES**



COD. DIS. 63.9605.00

**UL1413 - UL1715
UL2009 - UL2011**

**STD.
VH VALVE
A – VH**

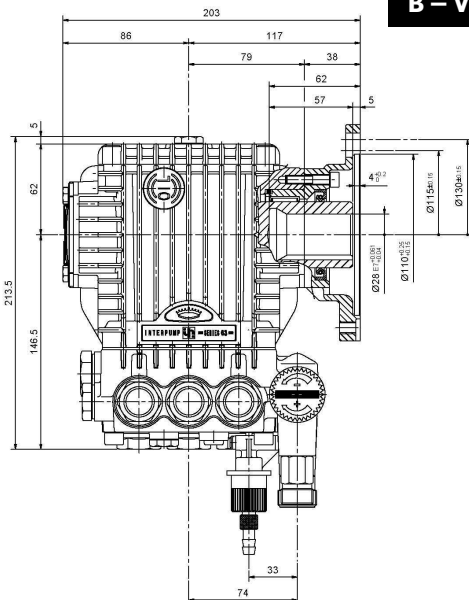
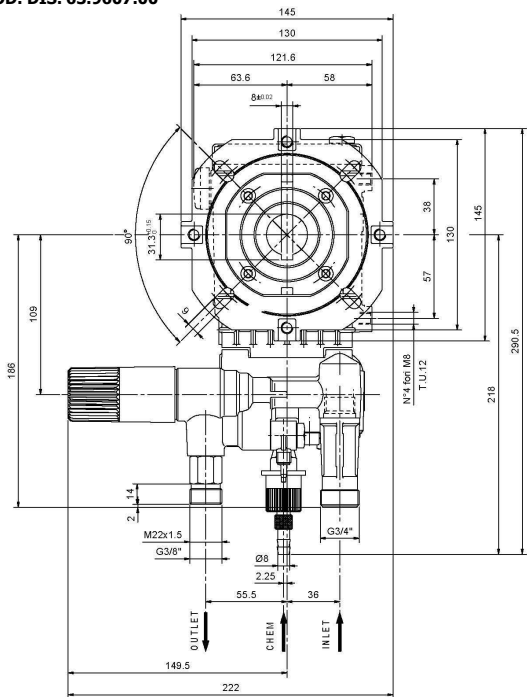


COD. DIS. 63.9606.00

**DIMENSIONI D'INGOMBRO – OVERALL DIMENSIONS – DIMENSIONS D'ENCOMBREMENT
RAUMBEDARF – DIMENSIONES TOTALES – DIMENSÕES**

COD. DIS. 63.9607.00

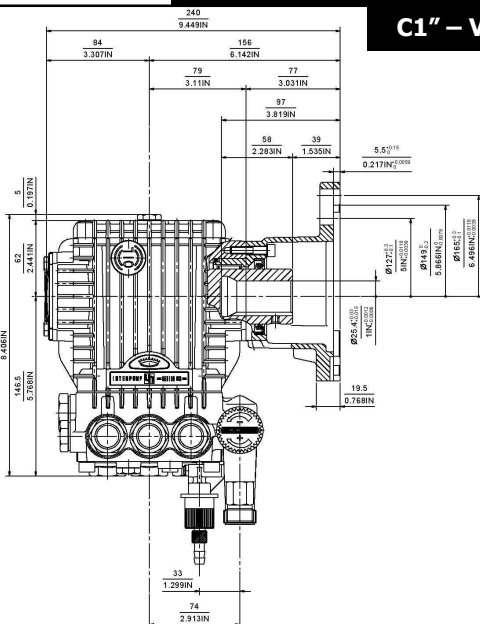
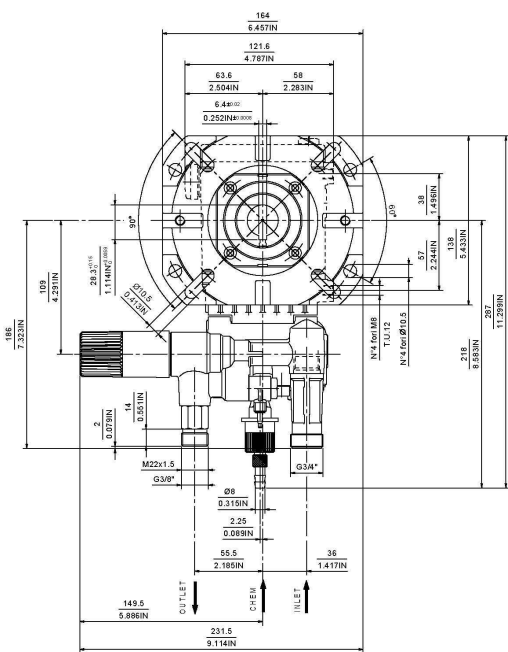
B – VH



**EH1413 - EH1416 - EH2009 - EH2011
EL1403 - EL1411 - EL1713 - EL2002
EL2007 - EL2009 - EL1714**

**UH2011 - UH2013
UH2014 - UH2016**

C1" – VH

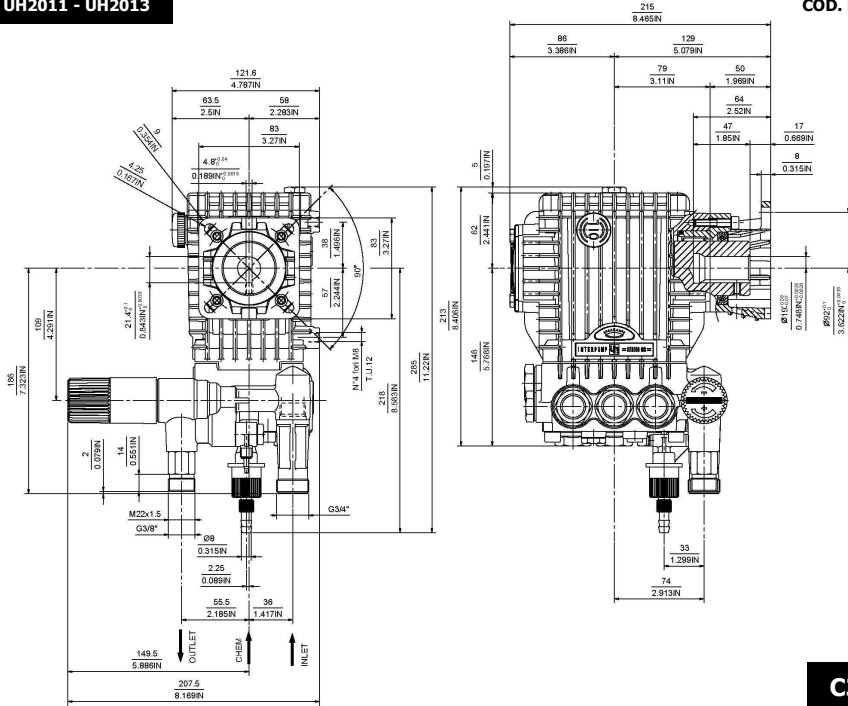


COD. DIS. 63.9608.00

DIMENSIONI D'INGOMBRO – OVERALL DIMENSIONS – DIMENSIONS D'ENCOMBREMENT RAUMBEDARF – DIMENSIONES TOTALES – DIMENSÕES

UH2008 - UH2011 - UH2013

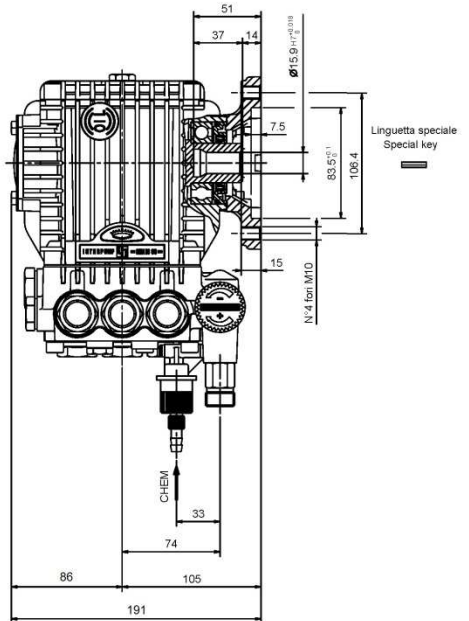
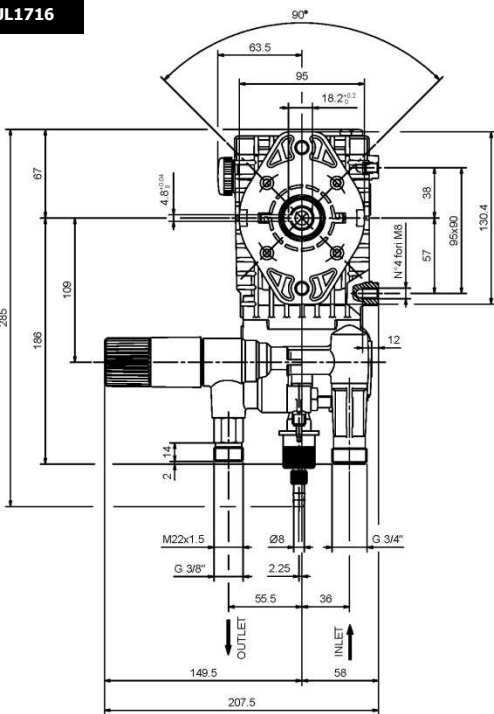
COD. DIS. 63.9609.00



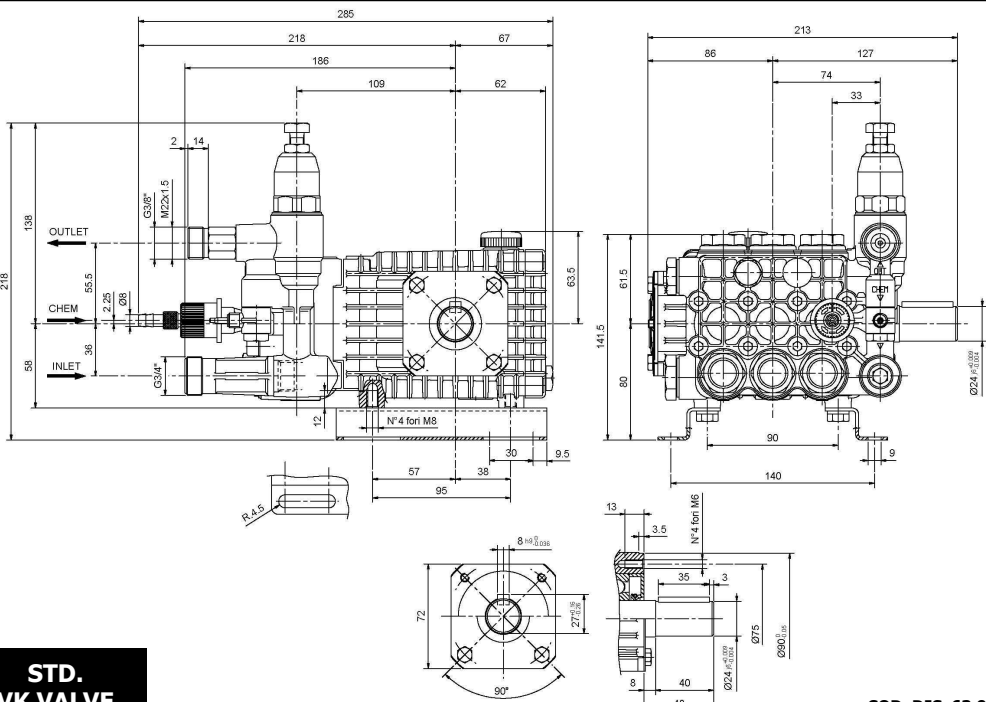
UL1716

C3/4" - VH

I - VH



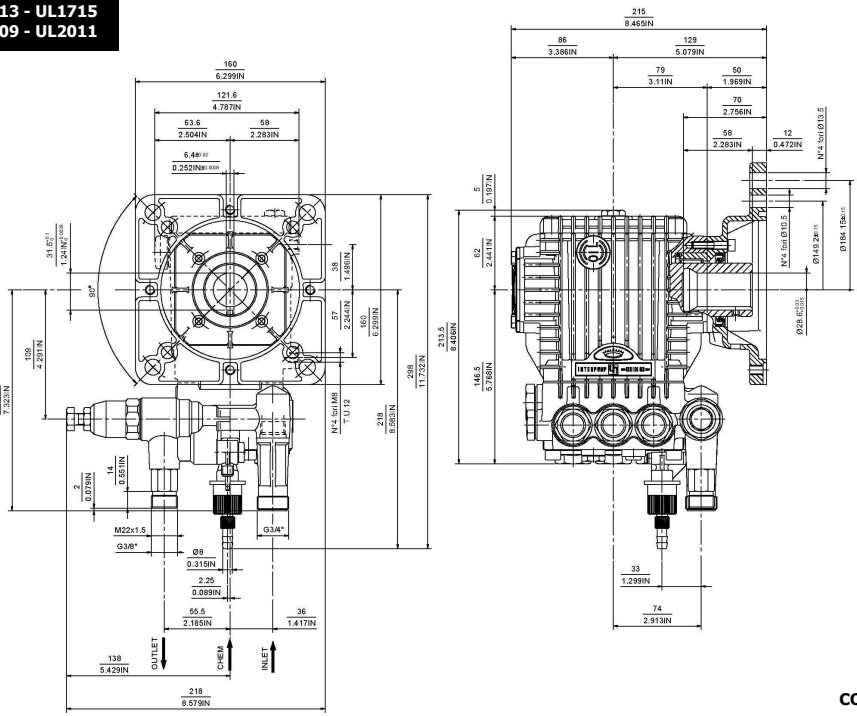
**DIMENSIONI D'INGOMBRO – OVERALL DIMENSIONS – DIMENSIONS D'ENCOMBREMENT
RAUMBEDARF – DIMENSIONES TOTALES – DIMENSÕES**



**STD.
VK VALVE**
UL1413 - UL1715
UL2009 - UL2011

COD. DIS. 63.9610.00

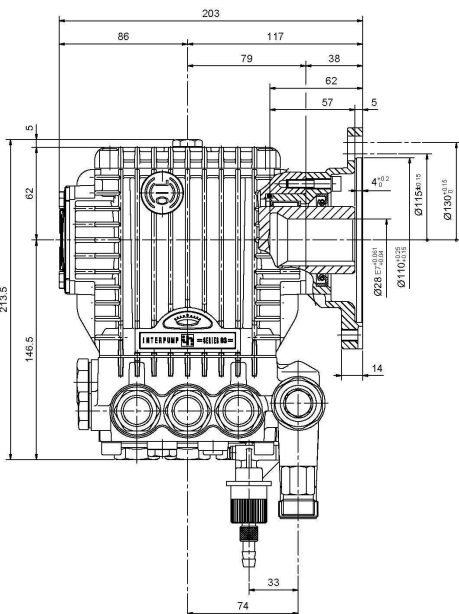
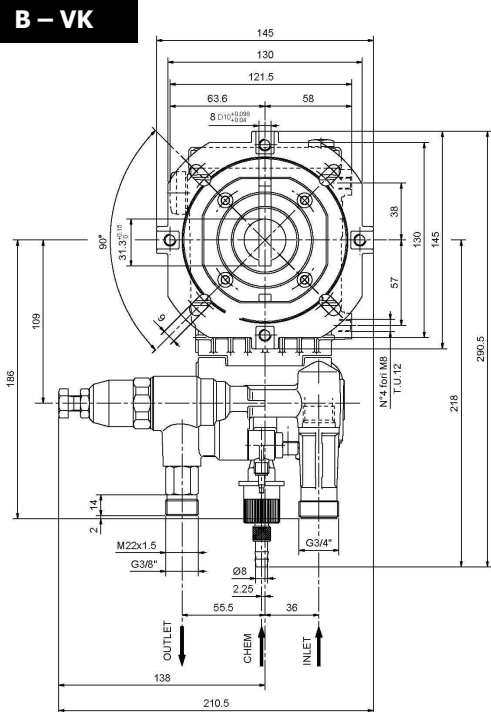
A – VK



COD. DIS. 63.9611.00

**DIMENSIONI D'INGOMBRO – OVERALL DIMENSIONS – DIMENSIONS D'ENCOMBREMENT
RAUMBEDARF – DIMENSIONES TOTALES – DIMENSÕES**

B – VK

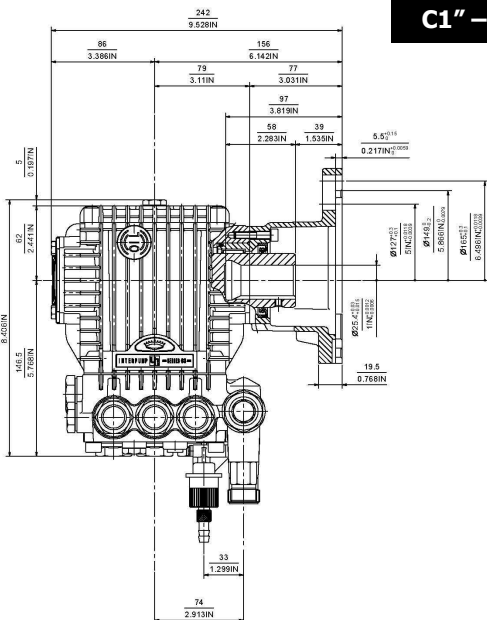
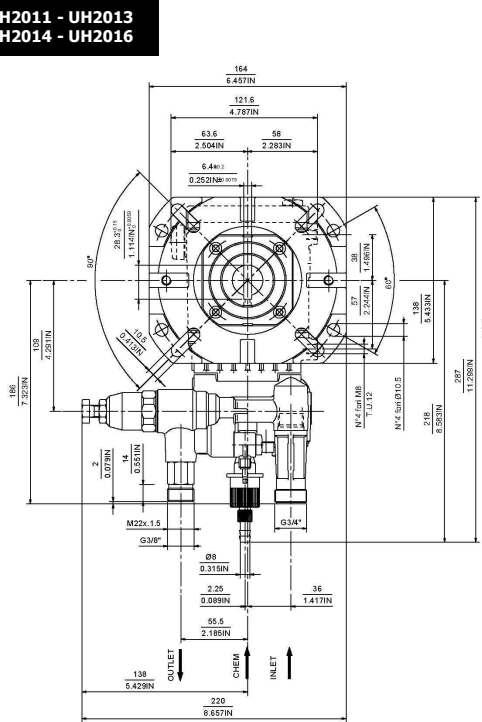


COD. DIS. 63.9612.00

**EH1413 - EH1416 - EH2009 - EH2011
EL1403 - EL1411 - EL1713 - EL2002
EL2007 - EL2009 - EL1714**

**UH2011 - UH2013
UH2014 - UH2016**

C1" – VK

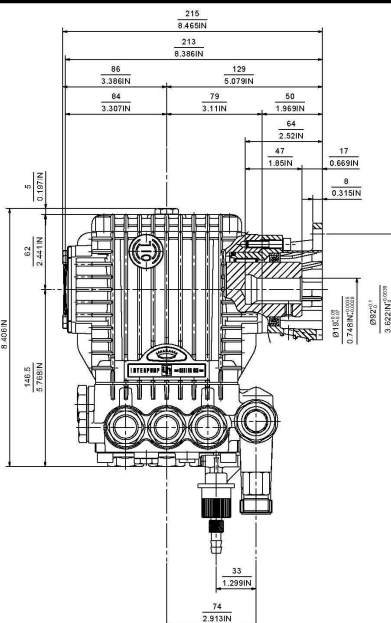
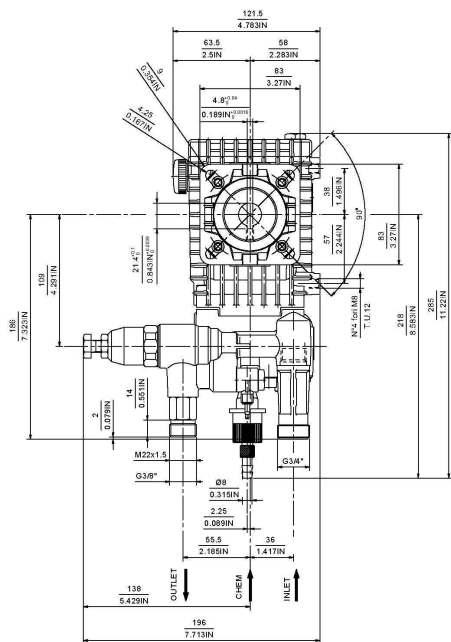


COD. DIS. 63.9613.00

**DIMENSIONI D'INGOMBRO – OVERALL DIMENSIONS – DIMENSIONS D'ENCOMBREMENT
RAUMBEDARF – DIMENSIONES TOTALES – DIMENSÕES**

C3/4" – VK

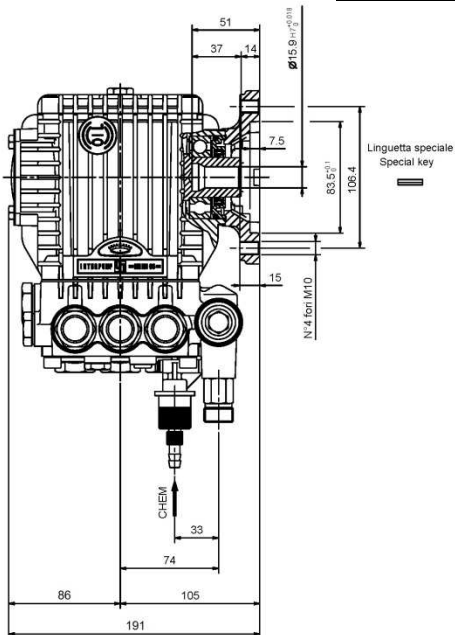
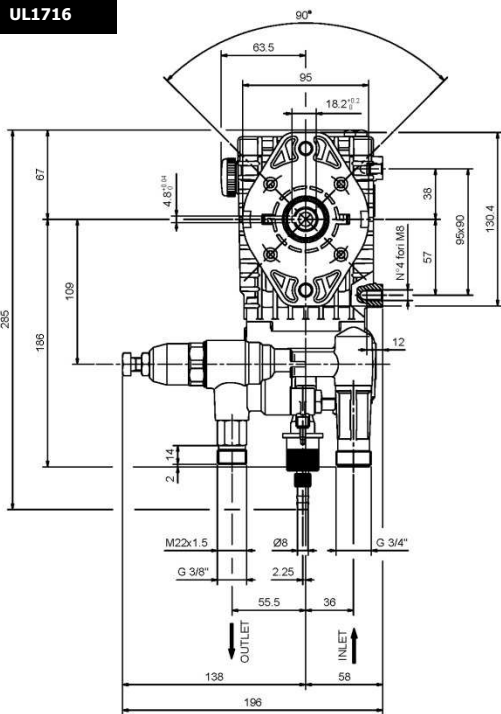
COD. DIS. 63.9614.00



UH2008 - UH2011 - UH2013

UL1716

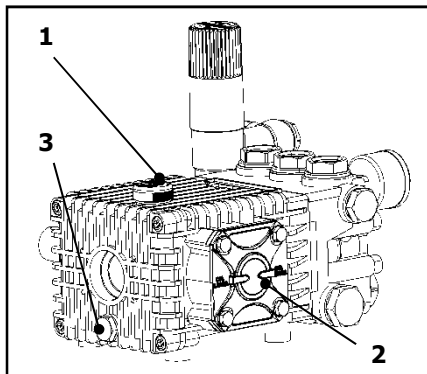
I – VK



Linguetta speciale
Special key

1 - CAMBIO OLIO

- 1.1 – Il cambio dell'olio va eseguito con pompa a temperatura di lavoro.
- 1.2 – Posizionare un recipiente sotto il tappo di scarico olio (3).
- 1.3 – Rimuovere il tappo con asta (1) e successivamente il tappo di scarico (3).
- 1.4 – Attendere fino a quando tutto l'olio è uscito, quindi riavvitare il tappo di scarico (3) con la coppia torcente indicata su disegno esplosivo.
- 1.5 – Riempire con olio nuovo fino al raggiungimento della mezzeria del tappo spia livello olio (2) e riavvitare il tappo con asta (1).



Per il tipo di olio da utilizzare fare riferimento a quanto indicato sul libretto generico.



ATTENZIONE: L'olio esausto deve essere raccolto in recipienti e smaltito negli appositi centri in accordo alla normativa vigente. Non deve essere assolutamente disperso nell'ambiente.

1 – OIL CHANGING

- 1.1 – Oil changing must be done with the pump at operating temperature.
- 1.2 – Put a container under the oil drain plug (3).
- 1.3 – Remove the oil dipstick (1) and then the drain plug (3).
- 1.4 – Wait until all the oil has drained out, then screw the drain plug (3) and tighten at the torque shown in the exploded diagram.
- 1.5 – Fill with new oil until the middle of the oil level indicator (2) is reached, screw by hand the oil dipstick (1).

Refer to the generic booklet for the type of oil to use.



WARNING: The exhaust oil must be collected in receptacles and disposed of at authorised centres as specified by law. It must not be thrown away in the environment.

1 - CHANGEMENT DE L'HUILE

- 1.1 – Le changement de l'huile doit être exécuté avec la pompe à température d'exercice.
- 1.2 – Placer un récipient sous le bouchon de vidange de l'huile (3).
- 1.3 – Enlever le bouchon-jauge (1), puis enlever le bouchon de vidange (3).
- 1.4 – Attendre que toute l'huile soit sortie, puis revisser le bouchon de vidange (3) avec le couple de torsion qui est indiqué sur le dessin éclaté.
- 1.5 – Remplir avec de l'huile neuve jusqu'à la ligne médiane du bouchon indicateur du niveau d'huile (2), et revisser le bouchon-jauge (1).

Pour le type d'huile à utiliser, se référer à ce qui est indiqué sur la notice générale.



ATTENTION : L'huile usée doit être recueillie dans des récipients et éliminée dans les centres prévus à cet effet, conformément à la réglementation en vigueur. Il ne faut absolument pas la jeter dans l'environnement.

1 - ÖLWECHSEL

1.1 – Beim Ölwechsel muss die Pumpe Betriebstemperatur aufweisen.

1.2 – Unter den Ölablassverschluss (3) einen Behälter stellen.

1.3 – Den Verschluss mit dem Stab (1) und danach den Ablassverschluss (3) abnehmen.

1.4 – Warten, bis das gesamte Öl abgelassen ist und den Ablassverschluss (3) mit dem auf der Übersichtszeichnung angegebenen Drehmoment wieder anschrauben.

1.5 – Mit frischem Öl füllen, bis die Mittellinie des Ölstandkontrollverschlusses (2) erreicht ist und den Verschluss mit dem Stab (1) wieder anschrauben.

Bezüglich der verwendbaren Ölsorten siehe die Angaben im allgemeinen Handbuch.



ACHTUNG: Das Altöl muss in Behältern gesammelt und gemäß den geltenden Vorschriften bei den hierfür vorgesehenen Zentren entsorgt werden. Es darf keinesfalls umweltschädigend entsorgt werden.

1 - CAMBIO DE ACEITE

1.1 – El cambio de aceite se efectúa con bomba a temperatura de trabajo.

1.2 – Colocar un recipiente debajo del tapón de descarga de aceite (3).

1.3 – Extraer el tapón con varilla (1) y seguidamente el tapón de descarga (3).

1.4 – Esperar hasta que haya salido todo el aceite, volver a enroscar el tapón de descarga (3) con el par de torsión indicado en el despiece.

1.5 – Llenar con aceite nuevo hasta alcanzar la línea media del tapón indicador de nivel de aceite (2) y volver a enroscar el tapón con varilla (1).

Para el tipo de aceite que debe utilizarse, remitirse a las indicaciones del manual general.



ATENCIÓN: El aceite residual debe recogerse en recipientes y eliminarse en los centros pertinentes de acuerdo con la normativa vigente. En ningún caso debe dispersarse en el ambiente.

1 - TROCA DE ÓLEO

1.1 – A troca de óleo deve ser feita com a bomba na temperatura de trabalho.

1.2 – Posicionar um recipiente embaixo da tampa de descarga de óleo (3).

1.3 – Remover a tampa com o pino (1) e, em seguida, a tampa de descarga (3).

1.4 – Esperar que todo o óleo saia, recolocar a tampa de descarga (3) com o binário de torção indicado no desenho explodido.

1.5 – Encher com o óleo novo até chegar na linha da tampa de controle do nível do óleo (2) e recolocar a tampa com o pino (1).

Para o tipo de óleo a ser utilizado, consultar as indicações do livro genérico.



ATENÇÃO: O óleo consumido deve ser coletado em recipientes e eliminado nos locais adequados, de acordo com a normativa vigente. Não deve, de modo algum, ser jogado no ambiente.

Dichiarazione di incorporazione **(Ai sensi dell'allegato II della Direttiva Europea 2006/42/CE).**

Il produttore **INTERPUMP GROUP S.p.A.** – Via E. Fermi, 25 – 42049 S.ILARIO D'ENZA (RE) - Italia
DICHIARA sotto la propria esclusiva responsabilità che l'attrezzatura identificata e descritta come segue :
Denominazione: Pompa
Tipo: Pompa alternativa a pistoni per acqua ad alta pressione
Marchio di fabbrica: INTERPUMP GROUP
Modello: EL2002 - EL2007 – EL2009 – EL1403 - EL1411 - EL1713 – EL1714 - UL2009 – UL2011 – UL1413
UL1715 – UL1716 - EH2009 - EH2011 – EH1413 - EH1416 – UH2008 - UH2011 - UH2013 – UH2016

Risulta essere conforme alle sotto elencate direttive e successivi aggiornamenti :

- Direttiva Macchine 2006/42/CE
- Direttiva sulla restrizione dell'uso di determinate sostanze pericolose nelle apparecchiature elettriche ed elettroniche 2011/65/UE - RoHS

L'attrezzatura non contiene sostanze con restrizioni d'uso in concentrazione maggiore di quelle elencate nell'allegato II ad eccezione delle applicazioni esentate dalle restrizioni elencate nell'allegato III.

Norme applicate : UNI EN ISO 12100:2010 - UNI EN 809:2000

La pompa sopra identificata rispetta i seguenti requisiti essenziali di sicurezza e di tutela della salute elencati nel punto 1 dell'allegato I della Direttiva Macchine :
1.1.2 - 1.1.3 - 1.1.5 - 1.3.1 - 1.3.2 - 1.3.3 - 1.3.4 - 1.5.4 - 1.5.5 - 1.6.1 - 1.7.1 - 1.7.2 - 1.7.4 - 1.7.4.1 - 1.7.4.2
e la relativa documentazione tecnica è stata compilata in conformità dell'allegato VII B.

Inoltre il produttore si impegna a rendere disponibile, a seguito di una richiesta adeguatamente motivata, copia della documentazione tecnica pertinente la pompa nei modi e nei termini da definire.

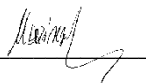
La pompa non deve essere messa in servizio finché l'impianto al quale la pompa deve essere incorporata è stato dichiarato conforme alle disposizioni delle relative direttive e/o norme.

Persona autorizzata a costituire il fascicolo tecnico : Nome: Maurizio Novelli

Indirizzo: INTERPUMP GROUP S.p.A. – Via E. Fermi, 25 – 42049 S. ILARIO D'ENZA (RE) – Italia

Persona autorizzata a redigere la dichiarazione : L'amministratore delegato Ing. Paolo Marinsek

Reggio Emilia 02/2013

Firma 

Declaration of incorporation **(In accordance with Annex II of European Directive 2006/42/CE).**

The manufacturer **INTERPUMP GROUP S.p.A.** – Via E. Fermi, 25 – 42049 S.ILARIO D'ENZA (RE) - Italy **DECLARES** under sole responsibility that the equipment identified and described as follows :

Name: Pump

Type: Reciprocating plunger pump for high pressure water

Trademark: INTERPUMP GROUP

Model: EL2002 - EL2007 – EL2009 – EL1403 - EL1411 - EL1713 – EL1714 - UL2009 – UL2011 – UL1413
UL1715 – UL1716 - EH2009 - EH2011 – EH1413 - EH1416 – UH2008 - UH2011 - UH2013 – UH2016

Complies with the requirements of the directives listed below and subsequent updates :

- Machinery Directive 2006/42/CE

- Directive 2011/65/EU – RoHS on the restriction of the use of certain hazardous substances in electrical and electronic equipment.

The equipment does not contain more than the specified concentrations of restricted substances listed in Annex II except for the applications exempted from the restriction listed in Annex III.

Standards applied : UNI EN ISO 12100:2010 - UNI EN 809:2000

The pump identified above meets all the essential safety and health protection requirements as listed in section 1 of Annex I of the Machinery Directive :

1.1.2 - 1.1.3 - 1.1.5 - 1.3.1 - 1.3.2 - 1.3.3 - 1.3.4 - 1.5.4 - 1.5.5 - 1.6.1 - 1.7.1 - 1.7.2 - 1.7.4 - 1.7.4.1 - 1.7.4.2
and the relevant technical documentation has been compiled in accordance with Annex VII B.

In addition, the manufacturer undertakes to make available, following a reasoned request, a copy of the relevant technical pump documentation in the manner and terms to be defined.

The pump should not be put into service until the plant to which the pump is to be incorporated has been declared in accordance with the provisions of the relevant directives and/or standards.

Person authorised to compile the technical file :

Name: Maurizio Novelli

Address: INTERPUMP GROUP S.p.A. – Via E. Fermi, 25 – 42049 S. ILARIO D'ENZA (RE) – Italy

Person authorized to draw up the declaration :

CEO Mr. Paolo Marinsek

Reggio Emilia 02/2013

Signature



Déclaration d'incorporation (Conformément à l'annexe II de la Directive Européenne 2006/42/CE).

Le fabricant **INTERPUMP GROUP S.p.A.** – Via E. Fermi, 25 – 42049 S.ILARIO D'ENZA (RE) - Italie
DÉCLARE sous sa seule responsabilité que l'équipement identifié et décrit comme suit :

Description: Pompe

Type: Pompe alternative à pistons pour eau à haute pression

Marque de fabrique: INTERPUMP GROUP

Modèle: EL2002 - EL2007 – EL2009 – EL1403 - EL1411 - EL1713 – EL1714 - UL2009 – UL2011 – UL1413
UL1715 – UL1716 - EH2009 - EH2011 – EH1413 - EH1416 – UH2008 - UH2011 - UH2013 – UH2016

Est conforme aux spécifications des directives énumérées ci-dessous et mises à jour suivantes:

- Directive Machines 2006/42/CE
- Directive relative à la limitation de l'utilisation de certaines substances dangereuses dans les équipements électriques et électroniques 2011/65/UE – RoHS

L'équipement ne contient pas de substances assorties de restrictions concernant l'utilisation en concentration plus élevée que celles énumérées à l'annexe II, sauf pour des applications exemptées des restrictions énumérées à l'annexe III.

Normes appliquées : UNI EN ISO 12100:2010 - UNI EN 809:2000

La pompe identifiée ci-dessus répond aux exigences essentielles de sécurité et protection de la santé suivantes énumérées au point 1 de l'annexe I de la Directive Machines :

1.1.2 - 1.1.3 - 1.1.5 - 1.3.1 - 1.3.2 - 1.3.3 - 1.3.4 - 1.5.4 - 1.5.5 - 1.6.1 - 1.7.1 - 1.7.2 - 1.7.4 - 1.7.4.1 - 1.7.4.2
et la documentation technique pertinente est constituée conformément à l'annexe VII B.

De plus, le fabricant s'engage à rendre disponible, suite à une demande adéquatement motivée, une copie de la documentation technique relative à la pompe dans les modes et les termes à définir.

La pompe ne doit pas être mise en marche tant que l'installation à laquelle la pompe doit être incorporée n'a pas été déclarée conforme aux dispositions des directives et / ou normes relatives.

Personne autorisée à réaliser le manuel technique :

Nom : Maurizio Novelli

Adresse: INTERPUMP GROUP S.p.A. – Via E. Fermi, 25 – 42049 S. ILARIO D'ENZA (RE) – Italie

Personne autorisée à rédiger la déclaration :

L'administrateur délégué Ing. Paolo Marinsek

Reggio Emilia 02/2013

Signature 

Einbauerklärung

(gemäß Anhang II der Europäischen Richtlinie 2006/42/EG).

Der Hersteller **INTERPUMP GROUP S.p.A.** – Via E. Fermi, 25 – 42049 S.ILARIO D'ENZA (RE) - Italien

ERKLÄRT auf alleinige Verantwortung, dass das wie folgt bezeichnete und beschriebene Gerät :

Bezeichnung: Pumpe

Typ: Kolbenpumpe für Hochdruck-Wasser

Herstellermarke: INTERPUMP GROUP

Modell: EL2002 - EL2007 – EL2009 – EL1403 - EL1411 - EL1713 – EL1714 - UL2009 – UL2011 – UL1413
UL1715 – UL1716 - EH2009 - EH2011 – EH1413 - EH1416 – UH2008 - UH2011 - UH2013 – UH2016

mit den nachstehend aufgelisteten Richtlinien und ihren nachfolgenden Aktualisierungen konform ist :

- Maschinenrichtlinie 2006/42/EG
- Richtlinie zur Beschränkung der Verwendung bestimmter gefährlicher Stoffe in Elektro- und Elektronikgeräten 2011/65/EU – RoHS

Das Gerät enthält keine Stoffe, für die Beschränkungen bezüglich ihrer Verwendung in Konzentrationen bestehen, die über denen im Anhang II liegen, mit Ausnahme von Anwendungen, die von den im Anhang II aufgeführten Beschränkungen ausgenommen sind.

Angewandte Normen : UNI EN ISO 12100:2010 - UNI EN 809:2000

Die oben genannte Pumpe genügt den folgenden grundlegenden Sicherheits- und Gesundheitsschutzanforderungen, die unter Punkt 1 des Anhangs I der Maschinenrichtlinie aufgeführt sind.
1.1.2 - 1.1.3 - 1.1.5 - 1.3.1 - 1.3.2 - 1.3.3 - 1.3.4 - 1.5.4 - 1.5.5 - 1.6.1 - 1.7.1 - 1.7.2 - 1.7.4 - 1.7.4.1 - 1.7.4.2
Die speziellen technischen Unterlagen wurden gemäß Anhang VII Teil B erstellt.

Darüber hinaus verpflichtet sich der Hersteller einzelstaatlichen Stellen auf begründetes Verlangen die speziellen technischen Unterlagen zur Pumpe in festzulegenden Modalitäten und Fristen zu übermitteln.


Die Pumpe darf erst dann in Betrieb genommen werden, wenn gegebenenfalls festgestellt wurde, dass die Maschine, in die die Pumpe eingebaut werden soll, den Bestimmungen der entsprechenden Richtlinien und/oder Normen entspricht .

Person, die bevollmächtigt ist, die relevanten technischen Unterlagen zusammenzustellen: Maurizio Novelli

Adresse: INTERPUMP GROUP S.p.A. – Via E. Fermi, 25 – 42049 S. ILARIO D'ENZA (RE) – Italien

Person, die zur Ausstellung dieser Erklärung bevollmächtigt ist: Der Geschäftsführer Ing. Paolo Marinsek

Reggio Emilia 02/2013

Unterschrift 

Declaración de incorporación

(De acuerdo con el anexo II de la Directiva Europea 2006/42/CE).

El fabricante **INTERPUMP GROUP S.p.A.** – Via E. Fermi, 25 – 42049 S.ILARIO D'ENZA (RE) – Italia **DECLARA** bajo su propia y exclusiva responsabilidad al aparato identificado y descrito del siguiente modo :

Denominación: Bomba

Tipo: Bomba alternativa con pistones para agua de alta presión

Marca de fábrica: INTERPUMP GROUP

Modelo: EL2002 - EL2007 – EL2009 – EL1403 - EL1411 - EL1713 – EL1714 - UL2009 – UL2011 – UL1413
UL1715 – UL1716 - EH2009 - EH2011 – EH1413 - EH1416 – UH2008 - UH2011 - UH2013 – UH2016

Resulta ser conforme con las directivas que se indican a continuación y con sus sucesivas actualizaciones:

- Directiva de Máquinas 2006/42/CE
- Directiva acerca de la restricción del uso de determinadas sustancias peligrosas en máquinas eléctricas y electrónicas 2011/65/UE – RoHS

El aparato no contiene sustancias con restricción de uso en concentración mayor de aquellas citadas en el anexo II, exceptuando las aplicaciones exentas de las restricciones citadas en el anexo III.

Normas aplicadas : UNI EN ISO 12100:2010 - UNI EN 809:2000

La bomba identificada anteriormente respeta los siguientes requisitos esenciales de seguridad y de protección de la salud citados en el punto 1 del anexo I de la Directiva de Máquina :

1.1.2 - 1.1.3 - 1.1.5 - 1.3.1 - 1.3.2 - 1.3.3 - 1.3.4 - 1.5.4 - 1.5.5 - 1.6.1 - 1.7.1 - 1.7.2 - 1.7.4 - 1.7.4.1 - 1.7.4.2
y la correspondiente documentación técnica ha sido compilada de acuerdo con el anexo VII B.

Además el fabricante se compromete en hacer disponible, después haberse llevado a cabo una solicitud adecuadamente motivada, una copia de la documentación técnica pertinente de la bomba en una modalidad y en un plazo aún por definir.

La bomba no debe ser puesta en funcionamiento, hasta que el sistema al cuál la bomba debe ser incorporada, haya sido declarado conforme a las disposiciones de las respectivas directivas y/o normativas.

Persona autorizada a realizar el fascículo técnico :

Nombre: Maurizio Novelli

Dirección: INTERPUMP GROUP S.p.A. – Via E. Fermi, 25 – 42049 S. ILARIO D'ENZA (RE) – Italia

Persona autorizada a redactar la declaración :

El administrador delegado Ing. Paolo Marinsek

Reggio Emilia 02/2013

Firma 

Declaração de incorporação (Nos termos do anexo II da Directiva Europeia 2006/42/CE).

O fabricante **INTERPUMP GROUP S.p.A.** – Via E. Fermi, 25 – 42049 S.ILARIO D'ENZA (RE) - Itália **DECLARA** sob a sua exclusiva responsabilidade que os equipamentos identificados e descritos tal como se segue :

Denominação: Bomba

Tipo: Bomba alternativa com pistões para água a alta pressão

Marca de fábrica: INTERPUMP GROUP

Modelo: EL2002 - EL2007 – EL2009 – EL1403 - EL1411 - EL1713 – EL1714 - UL2009 – UL2011 – UL1413
UL1715 – UL1716 - EH2009 - EH2011 – EH1413 - EH1416 – UH2008 - UH2011 - UH2013 – UH2016

Está em conformidade às directivas abaixo indicadas e posteriores actualizações :

- Directiva Máquinas 2006/42/CE
- Directiva sobre a restrição de uso de determinadas substâncias perigosas em aparelhos eléctricos e electrónicos 2011/65/UE – RoHS

O equipamento não contém substâncias com restrições de uso em concentração superior às indicadas no anexo II, à excepção das aplicações isentas das restrições indicadas no anexo III.

Normas aplicadas : UNI EN ISO 12100:2010 - UNI EN 809:2000

A bomba acima identificada respeita os seguintes requisitos essenciais de segurança e de tutela da saúde, referidos no ponto 1 do anexo I da Directiva Máquinas :

1.1.2 - 1.1.3 - 1.1.5 - 1.3.1 - 1.3.2 - 1.3.3 - 1.3.4 - 1.5.4 - 1.5.5 - 1.6.1 - 1.7.1 - 1.7.2 - 1.7.4 - 1.7.4.1 - 1.7.4.2 e a respectiva documentação técnica foi compilada em conformidade com o anexo VII B.

Além disso, o fabricante compromete-se a disponibilizar, mediante pedido adequadamente motivado, uma cópia da documentação técnica referente à bomba, em modos e termos a definir.

A bomba não deve ser colocada em funcionamento até que o sistema no qual tem de ser incorporada seja declarado em conformidade com as disposições das respectivas directivas e/ou normas.

Pessoa autorizada a compilar a documentação técnica : Nome: Maurizio Novelli

Morada: INTERPUMP GROUP S.p.A. – Via E. Fermi, 25 – 42049 S. ILARIO D'ENZA (RE) – Itália

Pessoa autorizada a redigir a declaração :

O administrador delegado Eng.º Paolo Marinsek

Reggio Emilia 02/2013

Assinatura



COPYRIGHT Il contenuto di questo libretto è di proprietà di INTERPUMP GROUP, ne è vietata la riproduzione e/o la divulgazione, anche parziale, a termini di legge.

COPYRIGHT The contents of this booklet are the property of INTERPUMP GROUP. Reproduction and divulgation, in whole or in part, are prohibited by law.

COPYRIGHT Le contenu de cette notice appartient à INTERPUMP GROUP : aux termes de la loi il est interdit de le reproduire et/ou de le divulguer, même partiellement.

COPYRIGHT Der Inhalt dieser Bedienungsanleitung ist Eigentum von INTERPUMP GROUP. Die auch nur teilweise Reproduktion und/oder Verbreitung ist gesetzlich verboten.

COPYRIGHT El contenido del presente manual es propiedad de INTERPUMP GROUP y está legalmente prohibida su reproducción y/o divulgación parcial o total.

COPYRIGHT O conteúdo deste livro é de propriedade da INTERPUMP GROUP, e é proibida a sua reprodução e/ou a sua divulgação, mesmo parcial, nos termos da lei.

Le informazioni presenti su questo documento possono essere variate senza preavviso.

The information contained in this document may change without notice.

Les informations présentes sur ce document peuvent être changées sans besoin de préavis.

Die in diesem Dokument enthaltenen Informationen können ohne Vorankündigung geändert werden.

La información contenida en el presente documento puede modificarse sin previo aviso.

As informações contidas neste documento poderão ser sujeitas a alterações sem aviso prévio.



**INTERPUMP
GROUP**

**AZIENDA CON SISTEMA
DI GESTIONE QUALITÀ
CERTIFICATO DA DNV
= ISO 9001 =**

VIA FERMI, 25 42049 S.ILARIO – REGGIO EMILIA (ITALY)
TEL.+39 – 0522 - 904311 TELEFAX +39 – 0522 – 904444
E-mail: info@interpumpgroup.it - <http://www.interpumpgroup.it>