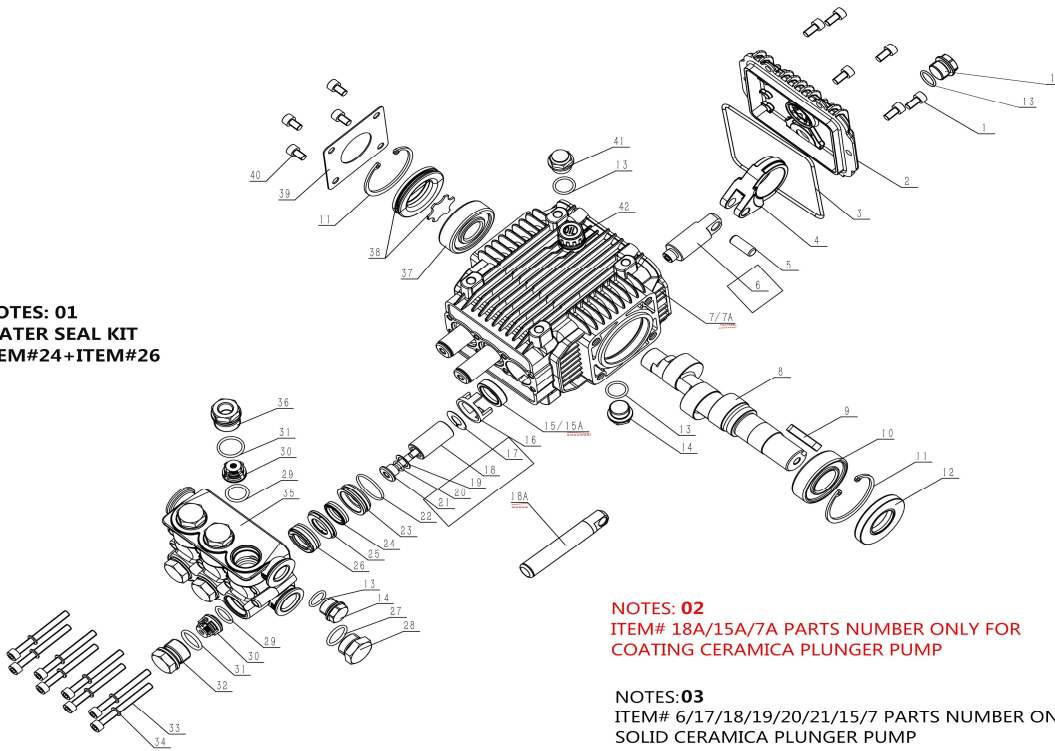


NOTES: 01  
WATER SEAL KIT  
ITEM#24+ITEM#26



NOTES: 02  
ITEM# 18A/15A/7A PARTS NUMBER ONLY FOR  
COATING CERAMICA PLUNGER PUMP

NOTES:03  
ITEM# 6/17/18/19/20/21/15/7 PARTS NUMBER ONLY FOR  
SOLID CERAMICA PLUNGER PUMP

PARTS #		Parts Description	配件名称	QTY
BM -1	590201014	Hexagon screw	内六角圆头螺丝	6
BM -2	301030101	BM Rear Cover	BM后盖组件	1
BM -3	590101011	O-ring	O型圈110*3	1
BM -4	500102200	<b>BM Connecting Rod</b>	BM连杆	3
BM -5	500102240	<b>BM Pin of plunger</b>	BM柱塞销	3
BM -6	500102100	<b>BM plunger lever</b>	BM20柱塞杆	3
BM-7A	500102020	<b>BM Crankcase-A</b>	BM18曲轴箱	1
BM -7	500102030	BM Crankcase	BM20曲轴箱	1
BM -8	500102360	<b>BM15 Solid Crankshaft 24mm(Tor)</b>	BM14-N24曲轴俄罗斯定制	1
BM-9	500011001	<b>flat key</b>	平键	1
BM -10	590302002	6205 Needle Bearing	深沟球轴承 6205	1
BM -11	590205005	Circlip,52-A	孔用弹性挡圈	2
BM -12	590108002	<b>Crankshaft Oil Seal</b>	TC骨架油封	1
BM -13	590101019	O-ring	O型圈14*1.8	4
BM -14	500010001	<b>BM Dipstick Gap</b>	堵头	3
BM -15	590107003	Oil Seal - 20*28*7	TC4骨架油封20	3
BM -15A	590107002	<b>Oil Seal - 18*28*7</b>	TC4骨架油封18	3
BM -16	500102050	BM 18MM Oil Seal Bracket	BM20支撑架	3
BM -17	500102150	BM WIPER	BM挡水片	3
BM-18A	500102070	<b>Ceramic coating plunger</b>	<b>18喷瓷柱塞</b>	<b>3</b>
BM -18	500102110	Solid Ceramic Tube	BM18陶瓷管	3
BM -19	500102210	BM sheet gasket	BM密封垫片	3
BM -20	590101105	O-ring	O型圈7.65*1.78	3
BM -21	500102220	Locking bolt	BM陶瓷管锁紧螺栓	3
BM -22	590101063	O-ring	O型圈26.7*1.78	3
BM -23	500101050	BM18MM Guide Ring	BM18后导环	3
BM -24	590105002	BM18 Aux. Water Seal	18副水封	3
BM -25	500101080	BM Support Ring	BM18支撑环	3
BM -26	590104008	BM18 Main Water Seal	主水封三件套	3
BM -27	590101035	O-ring	O型圈17*2	1
BM-28	500010002	BM 1/2 Plug	堵头	1
BM-29	590101023	O-ring	O型圈15*2.4	6
BM-30	500101150	BM Checkign Valve-A(7-19L/min)	BM单向阀A(7-19L/min)	6
BM-31	590101042	O-ring	O型圈18*2.5	6
BM-32	500101100	BM Valve Nut	BM单向阀螺丝	5
BM-33	590201007	Hexagon screw	内六角圆头螺丝	8
BM-34	590204102	Washer D6	双面齿垫	8
BM-35	500101020	BM Cylinder	BM18泵头	1
BM -36	500101100	BM Valve Nut9(with hole)	BM带孔单向阀螺丝	1
BM -37	590302004	Ball Bearing 6304	深沟球轴承 6304	1
BM -38	301210101	BM Side Oil Indicator	BM侧油镜组件	1
BM -39	500102230	BM Side Plate	BM压板	1
BM -40	590201016	Hexagon screw	内六角圆头螺丝	4
BM -41	101702010	Oil plug	BM油塞	1
BM -42	301150101	Oil leveler	BM油标	1

