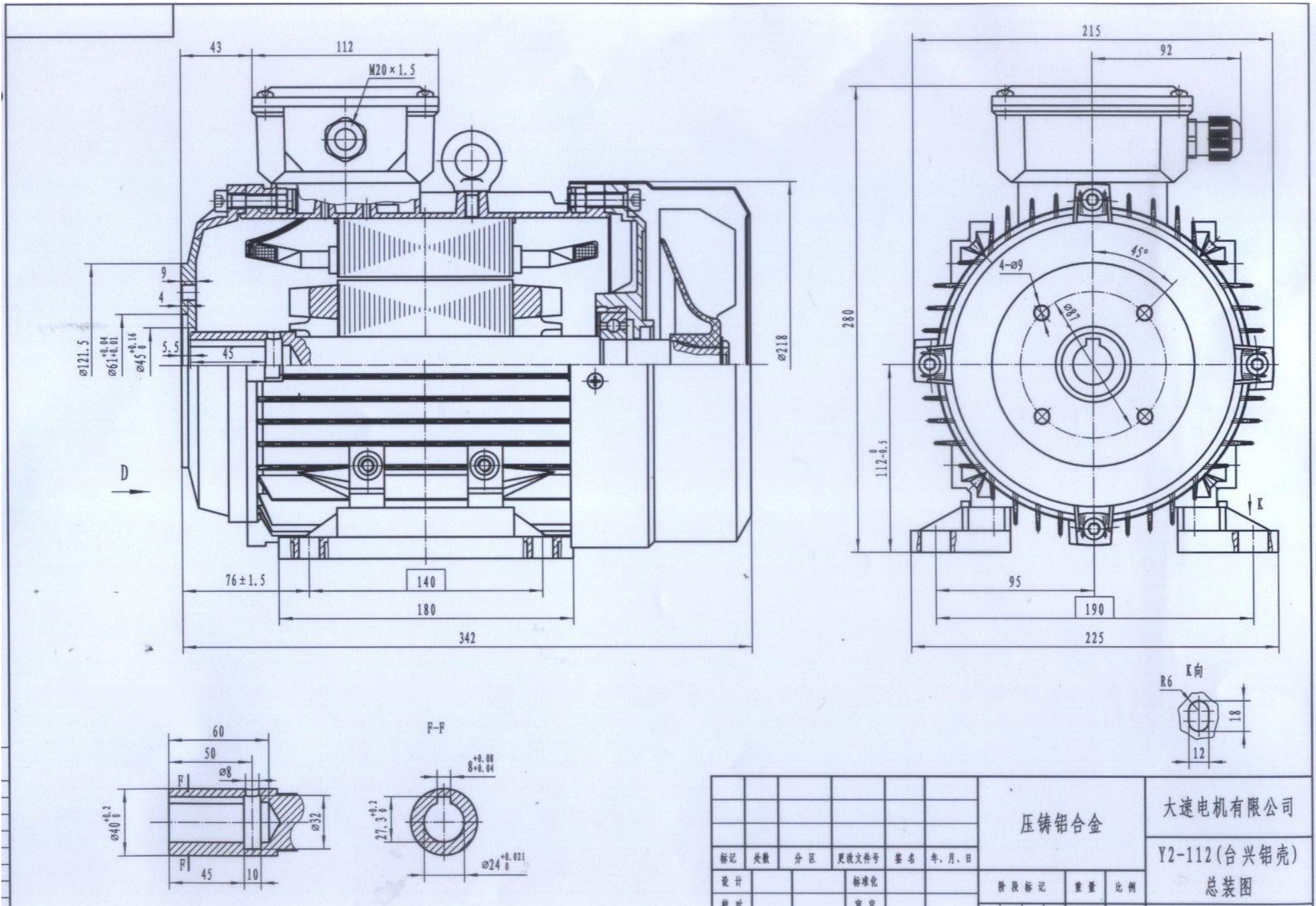
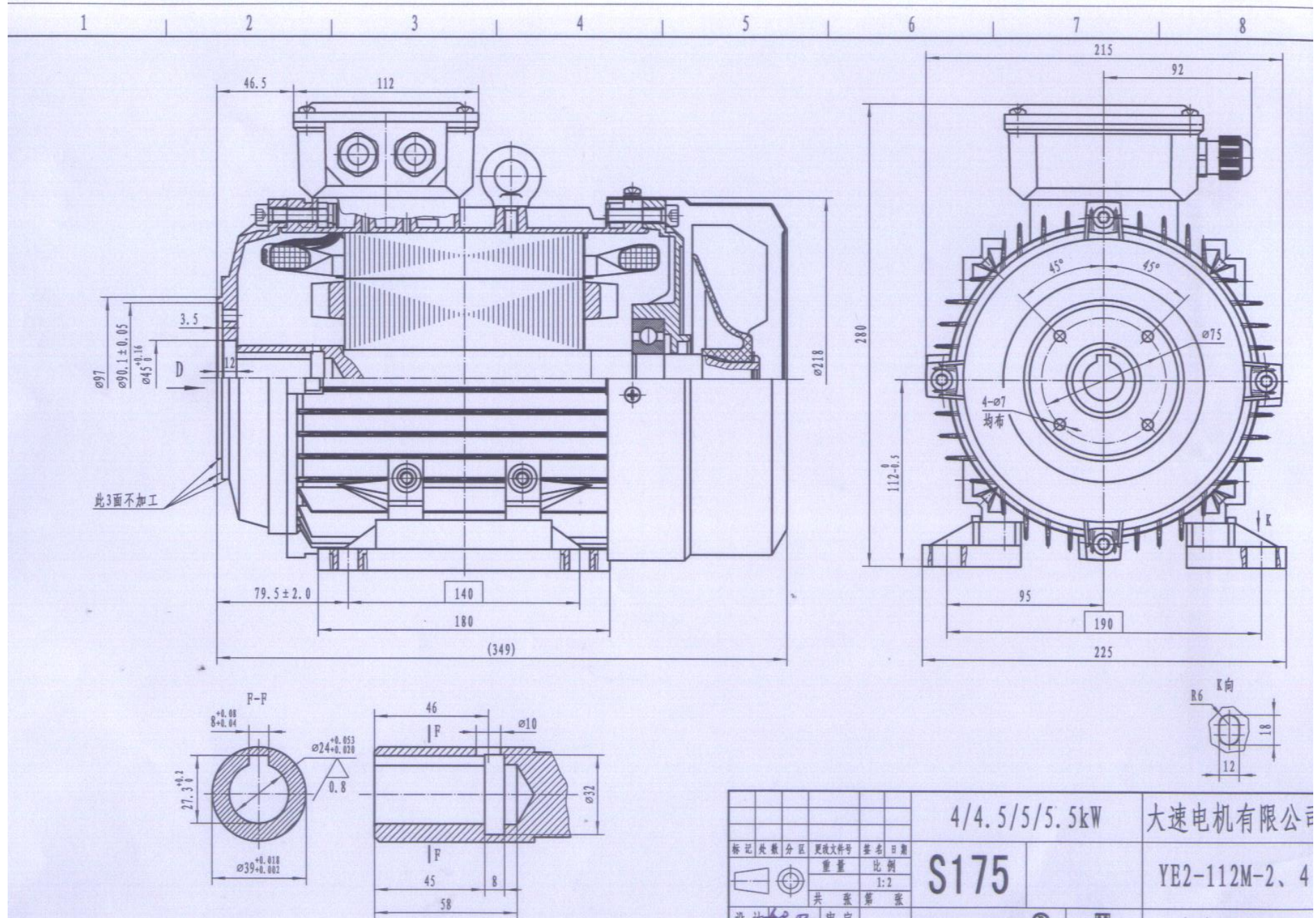


Model 1. Y2 14550 (1833A SCHEME), 5,5KW-4pole, HOLLOW SHAFT, FLANGE HOLE DIA.=87MM, 31.5KGS

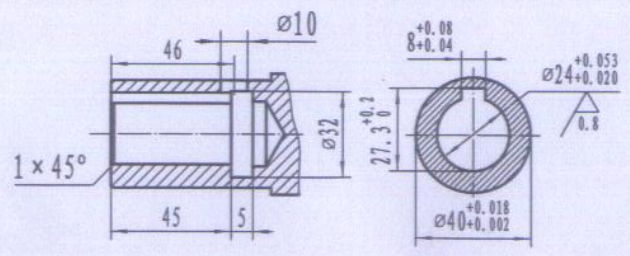
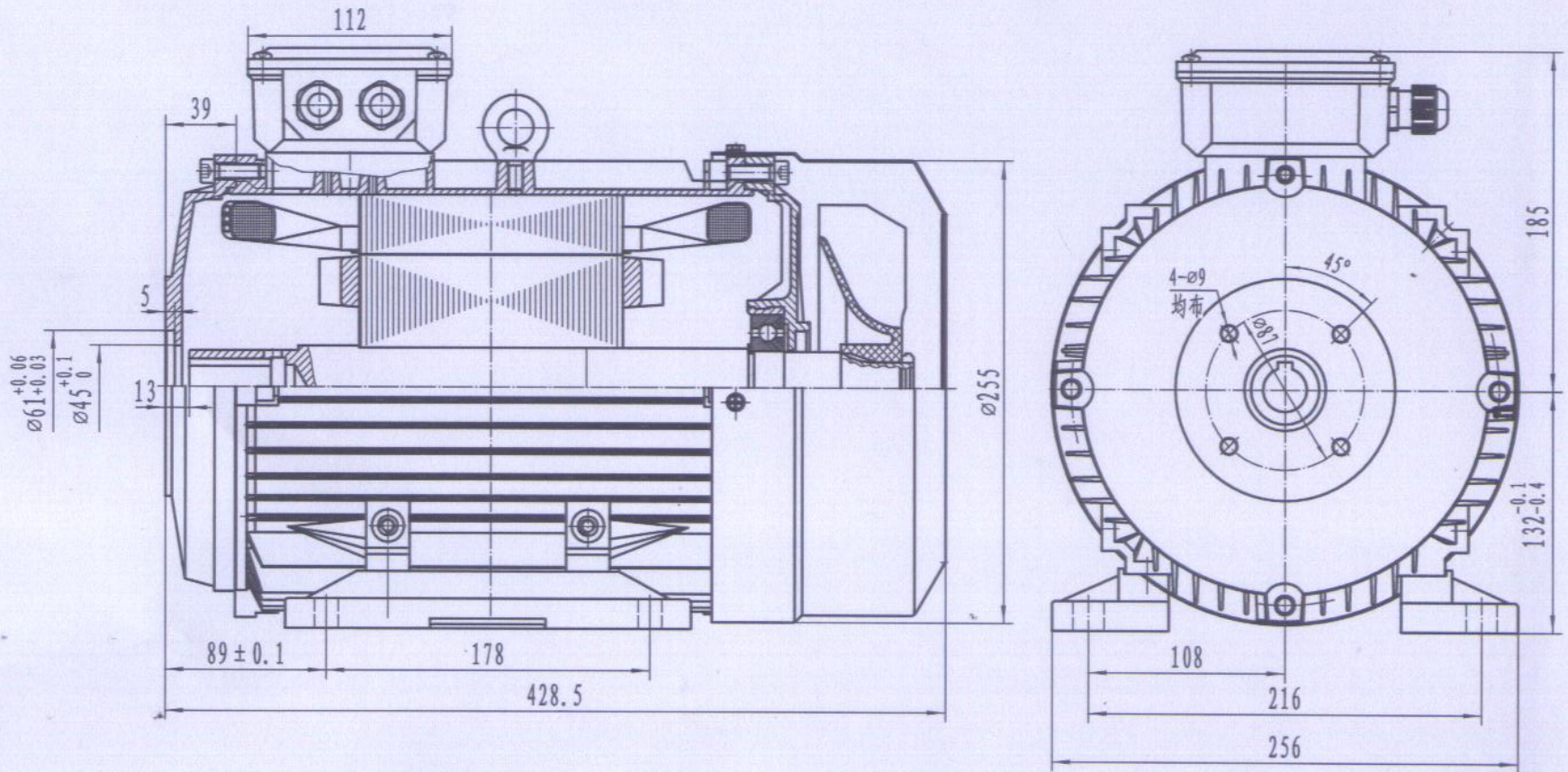


						压铸铝合金		大速电机有限公司	
								Y2-112(台兴铝壳)	
								总装图	
标记	数量	分区	更改文件号	签名	年、月、日	阶段标记	重量	比例	
设计			标准化						
校对			审定						

- Model 2. Y2 14400 (1901A SCHEME), 4KW-4pole, HOLLOW SHAFT, FLANGE HOLE DIA.=75MM, 28KGS
 Model 3. Y2 14440 (1917A SCHEME), 4.4KW-4pole, HOLLOW SHAFT, FLANGE HOLE DIA.=75MM, 30KGS
 Model 4. Y2 28500 (1874A SCHEME), 5KW-2pole, HOLLOW SHAFT, FLANGE HOLE DIA.=75MM 28.3KGS



Model 5. Y2 14441 (1846A SCHEME), 7.5KW-4pole, HOLLOW SHAFT, FLANGE HOLE DIA.=87MM, 50.2KGS



				大速电机有限公司	
标记	处数	分区	更改文件号	签名	日期
				重量	比例
				共张	第张
				S176	

Model 6. Y2 14750 (2609A SCHEME), 4.4KW-4pole, MALE SHAFT, 30.6KGS

Model 7. Y2 14551(2478A SCHEME), 5.5KW-4Ppole, MALE SHAFT, 32.7KGS

