

## Carpet Cleaner

- ◆ LC-20SC Carpet Cleaner
- ◆ LC-40SC Carpet Cleaner
- ◆ LC-30SC Carpet Cleaner
- ◆ LC-602SC Carpet Cleaner
- ◆ LC-802SC Carpet Cleaner



Subagency

# CONTENTS

<b>Cautions before Operation</b> .....	<b>1</b>
<b>Safety Considerations</b> .....	<b>1</b>
<b>Product Introduction</b> .....	<b>2</b>
<b>Main Structure</b> .....	<b>2-3</b>
<b>Technical Parameters</b> .....	<b>4</b>
<b>Daily Operation Precautions</b> .....	<b>5</b>
<b>Pump Blockage Dredge Method</b> .....	<b>5</b>
<b>Troubleshooting</b> .....	<b>6</b>
<b>Product Exploded View</b> .....	<b>7-12</b>








## CAUTIONS:

- I. This machine is not intended for use by the physically weak, intellectually obtuse or mentally disabled people (including children), unless it is safely used under the help or instructions of those who are responsible for their safety.
- II. The children shall be supervised to ensure that they will not play the machine.
- III. Be sure to remove the power plug from the socket before cleaning or repairing the machine.
- IV. In the event that the power cables are damaged or loose, please have them replaced by the manufacturer's service station or qualified technician. The connection is X-type connection.
- V. Remove the power plug after stopping the machine.
- VI. Power supply must be matched with the power voltage and frequency of the machine.

## Cautions before Operation

Welcome to buy and use LC Series Carpet Cleaner. Before use, please be sure to read this User Manual thoroughly. This manual provides important information on safe operation and maintenance of the machine. If you try to operate the machine or perform any maintenance without reading this Manual, it might cause danger to you or other people, or cause damage to the machine or other substances. Therefore, the operators must accept adequate training before they are allowed to operate this machine.

## Safety Considerations

-  **DANGER:** Operation or maintenance of the machine without reading the User Manual might cause injury to you or other people, or cause damage to the machine or other substances. The operators must accept adequate training before they are allowed to operate this machine.
-  **DANGER:** Please do not use this machine close to the inflammable or explosive substances. Never add any inflammable substances into this machine.
-  **DANGER:** To avoid electric shock, please immediately stop this machine when the power cord is damaged. In this case, please immediately seek help from the manufacturer's service agency or equivalent qualified personnel for replacement.
-  **DANGER:** To avoid electric shock, please cut off the power supply during care or maintenance of the machine.
-  **WARNING:** When there is any foam or liquid overflowing, please immediately disconnect the machine from the power supply. Then, find our the cause and eliminate it.
-  **WARNING:** The machine is very heavy. Therefore, do not stop the machine on slope or inclined face, and never start the machine on slope.
-  **WARNING:** Do not clean with the water higher than 50°C; otherwise the machine will be damaged.

## Product Introduction

LC series Carpet Cleaner us a machine that can be used to dry and wet clean, and can be used for carpet cleaning. When doing carpet cleaning, spraying , wahsing,and drying 3 process is complete at the same time which make the carpet clean at all. The body design is novel and fashionable, with flexible & convenient use, especially suitable for the corridor, the conference hall, restaurant etc. Places for carpet cleaning.

## Main Structure

Structural Diagram of Carpet Cleaner

1. Lift Handle
2. Head Unit
3. Grab Handle
4. Liquid Tank
5. Fan Switch
6. Water Pump Switch
7. Quick Connector
8. Steel Pipe
9. Air Suction Pipe
10. Steel Drum
11. Big Water Sucker
12. Chassis
13. Small Water Sucker



## Main Structure

Structural Diagram of Carpet Cleaner

1. Lift Handle
2. Head Unit
3. Grab Handle
4. Liquid Tank
5. Fan Switch
6. Water Pump Switch
7. Quick Connector
8. Steel Pipe
9. Air Suction Pipe
10. 60L/80L Steel Drum  
60L Plastic Drum
11. Big Water Sucker
12. Sewage Pipe
13. Chassis
14. Small Water Sucker



## Technical Parameters

### 20/30/40L

Voltage	220-240V 50Hz/60Hz
Power	1034W
Height	670,760,885mm
Tank diameter	Φ335mm
Main body capacity	20L,30L,40L
Clean water capacity	10L
Vacuum suction	230mbar
Air flow rate	53L/S
Mode of cooling	Cycle air-cooled
Water sucking motor	220V.AC/34W
Pressures	87PSI
Hose diameter	Φ40mm
Big water sucker width	250mm
Little water sucker width	85mm
Length of the power cable	7m

### 60/80L

Voltage	220-240V 50Hz/60Hz
Power	2110W
Height	940,1090mm
Tank diameter	Φ440mm
Main body capacity	60L,80L
Clean water capacity	20L
Vacuum suction	250mbar
Air flow rate	106L/S
Mode of cooling	Cycle air-cooled
Water sucking motor	220V.AC/110W
Pressures	116PSI
Hose diameter	Φ40mm
Big water sucker width	250mm
Little water sucker width	85mm
Length of the power cable	8m

## Daily Operation Precautions

1. This machine must not suck into flammable, explosive and corrosive substances.
2. The main body of machine must not be wet or soaked in water.
3. It is recommended that the user use a neutral detergent.
4. Before using the pumping function, 15-25ml of defoaming agent must be added into the steel drum.
5. Before using the pumping function, the dust bag inside the steel drum must be removed.
6. Check the filter screen of the suction pipe in the clean water tank before use. The filter screen must be intact without damage and blockage.
7. The temperature of the cleaning solution used in this machine should not be higher than 50 degrees Celsius.
8. When the pump is turned on for 1 minute, the pump has working sound but no water comes out. The pump should be stopped, and should not be started until the causes of water failure are identified and eliminated.
9. After the pumping operation, suck in clean water for 20-30 seconds to rinse the residual detergent in the pump and pipe.

## Pump Blockage Dredge Method

1. **The pump of the LC-40SC/30SC/20SC carpet washing machine is a small electromagnetic water pump. The following situations may cause the pump to be blocked, while the pump coil may work normally (with working noise) but the pump does not discharge water.**
  - a. The machine is stopped using for a long time, and the rubber valve in the pump is stuck to the valve seat.
  - b. Solid impurities in the cleaning liquid accumulate in the pump.
  - c. The cleaning liquid remaining in the pump for a long time is gathered, which makes the rubber valve blocked and invalid.
2. **In case of clogging, please dredge it according to the following methods before starting the machine**
  - a. Open the water tank cover according to Figure 1 and pull out water suction hose and remove the filter.
  - b. Connect the water suction hose to the tap water pipe according to Figure 2.
  - c. Pass the tap water according to Figure 3, and the water can be discharged from the quick-connect connector of the machine head.



Pic1



Pic2

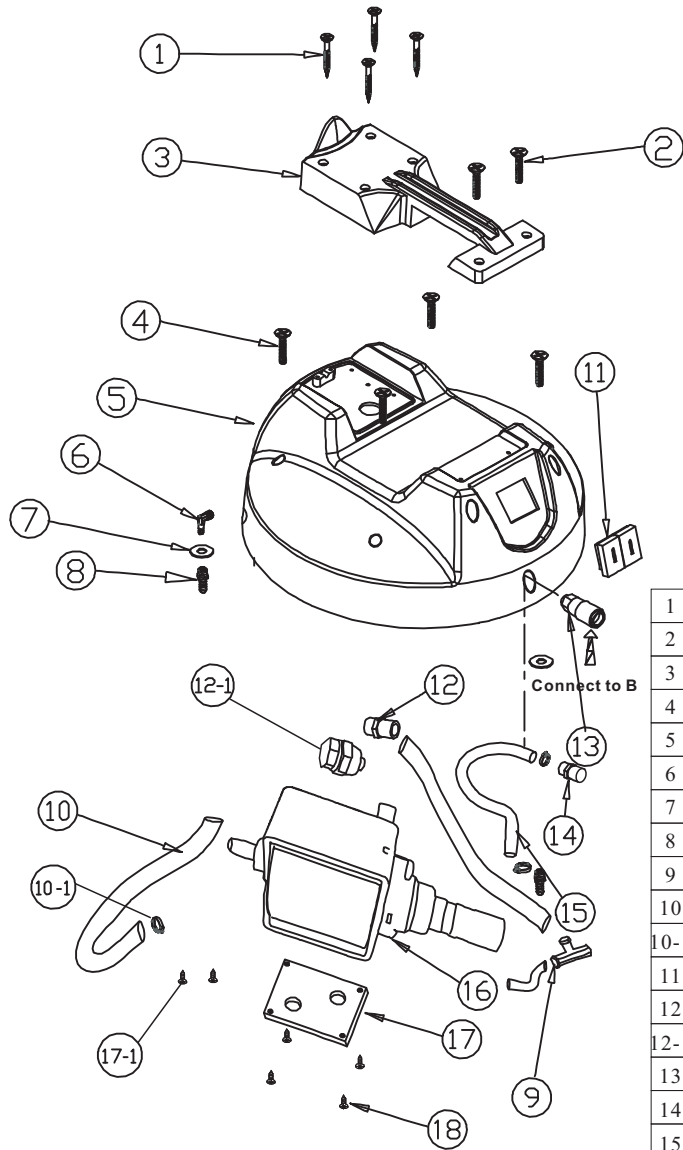


Pic3

## Main Troubles and How to Solve Them

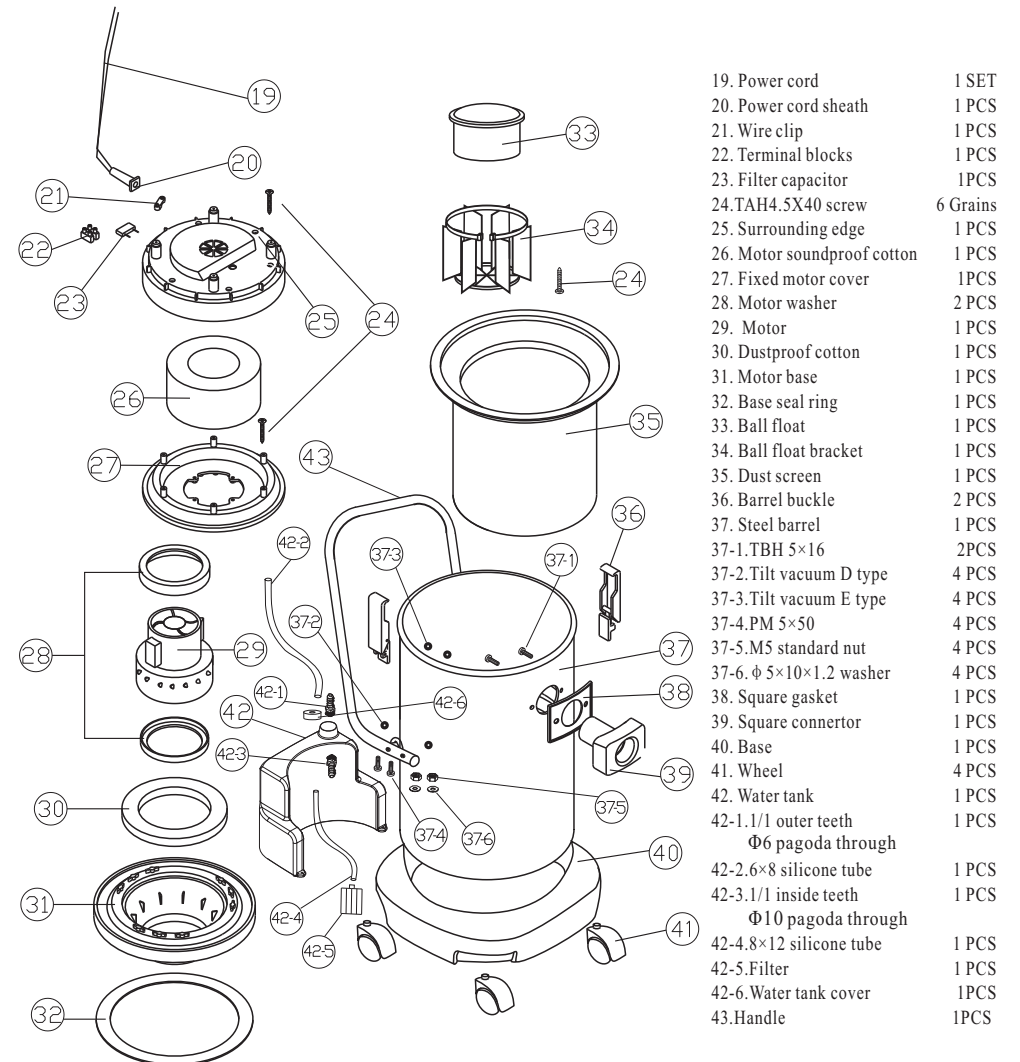
Symptom	Cause	How to Solve
No power supply	The power cord is damaged.	Replace the power cord.
	The power supply in the house or building is disconnected or tripped.	Check, repair or replace.
The power is switched on, but all the motors run intermittently.	Power cord problem	Repair or replace
	The switch is damaged.	
	The terminal is loose or the contact is poor.	
No sucking force or the sucking force is low.	The drain valve is open.	Close the drain valve.
	The gap between the motor head and tank is unsealed.	Tighten and seal it.
	The interface between the aspiration pipe and the interface on the tank is unsealed.	Plug in and seal it.
	The water suction pipe is blocked.	Clean the aspiration pipe
	There is dirt deposited on floating ball support.	Remove the dirt.
	The aspiration pipe is damaged	Replace the aspiration pipe
	The vacuum motor installation is loose.	Tighten the screws.
The pump is on, the machine has working sound, but the nozzle does not spray the solution	The nozzle & filter is blocked	Wash the nozzle & filter
	The suction pipe filter in the water tank is blocked	Clean the filter
	The sealant in the pump is damaged	Replace the sealant
	Foreign material exists in the pump.	Remove the strainer in the water tank and rinse it with tap water.

## Breakdown Drawing (1) of 20L/30L/40L Carpet Cleaning Machine



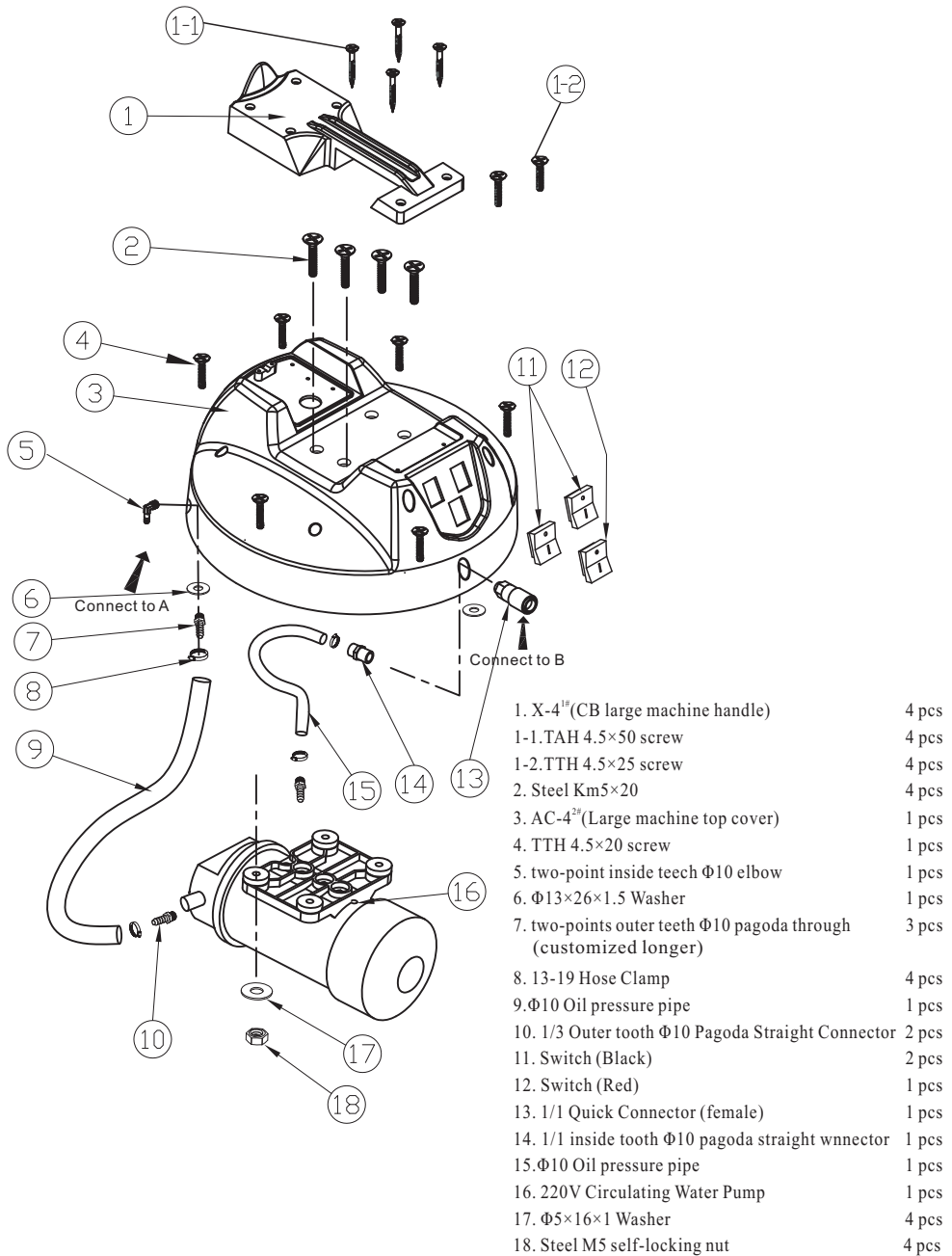
1	TAH4.5×40 screw	4 PCS
2	TTH4.5×25 screw	2 PCS
3	X-3/1# handle	1PCS
4	TTH4.5×25 screw	4 PCS
5	Top cover LC-3/2#	1PCS
6	1/1 outer teeth Φ6 pagoda through	1PCS
7	Φ19×Φ13×1 washer	2PCS
8	1/1 inside teeth Φ6 pagoda through	1PCS
9	1/1 Φ8 T-connector	1PCS
10	6×8 silicone tube	1set
10-1	Φ8 hose clamp	2PCS
11	Switch (red)	2PCS
12	Pressure relief valve	1PCS
12-1	1/1 inside teeth Φ8 straight through	1PCS
13	1/1 quick coupling (female)	1PCS
14	1/1 inside toothΦ8 pagoda straightway valve	1PCS
15	6×8 transparent tube	2set
16	220V Water pump	1PCS
17	Fixed plate of pump	1PCS
17-1	KM 5×6 Steel screw	2PCS
18	TA 4×12 screw	4PCS

## Breakdown Drawing (2) of 20L/30L/40L Carpet Cleaning Machine

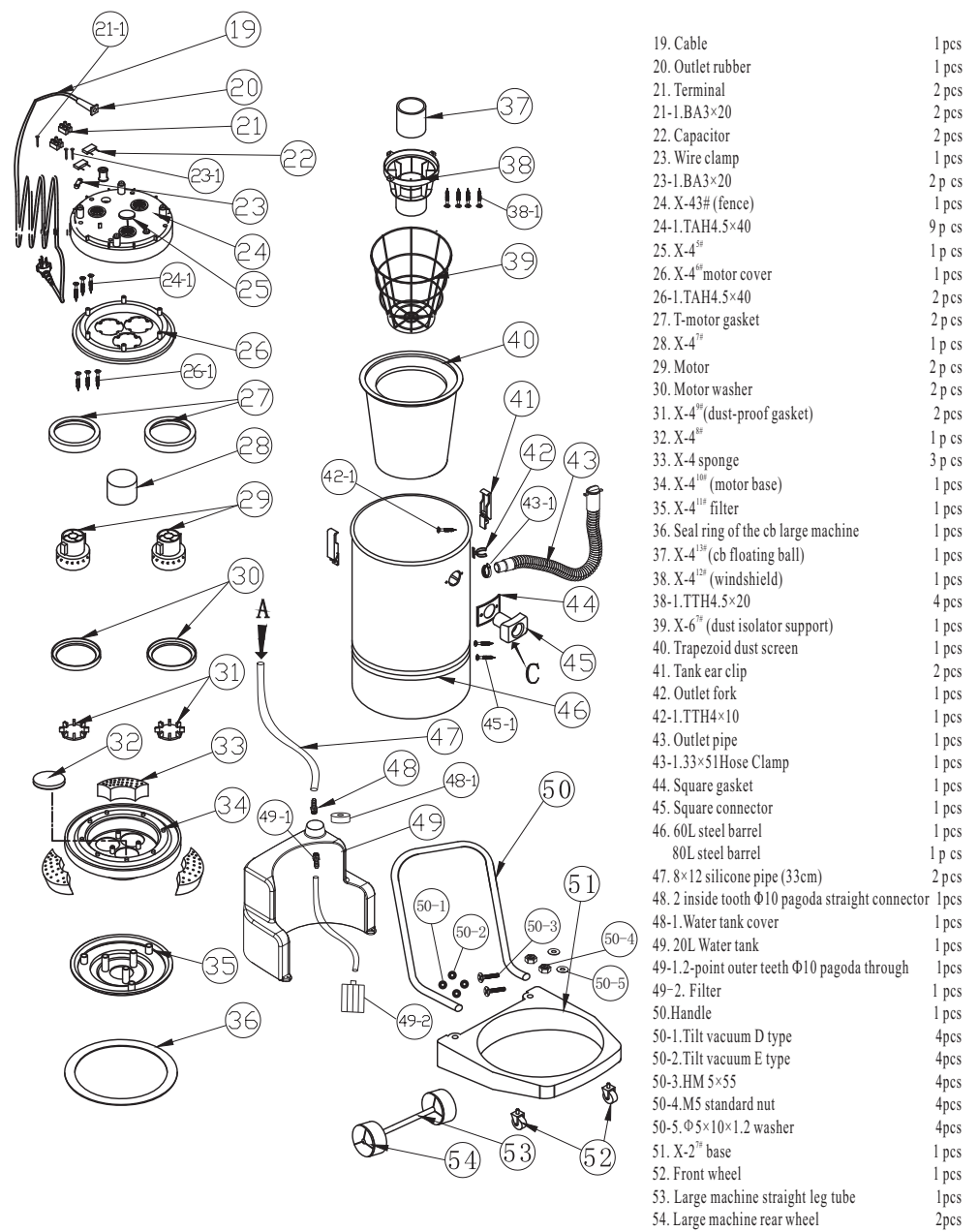


19.	Power cord	1 SET
20.	Power cord sheath	1 PCS
21.	Wire clip	1 PCS
22.	Terminal blocks	1 PCS
23.	Filter capacitor	1PCS
24.	TAH4.5X40 screw	6 Grains
25.	Surrounding edge	1 PCS
26.	Motor soundproof cotton	1 PCS
27.	Fixed motor cover	1PCS
28.	Motor washer	2 PCS
29.	Motor	1 PCS
30.	Dustproof cotton	1 PCS
31.	Motor base	1 PCS
32.	Base seal ring	1 PCS
33.	Ball float	1 PCS
34.	Ball float bracket	1 PCS
35.	Dust screen	1 PCS
36.	Barrel buckle	2 PCS
37.	Steel barrel	1 PCS
37-1.	TBH 5×16	2PCS
37-2.	Tilt vacuum D type	4 PCS
37-3.	Tilt vacuum E type	4 PCS
37-4.	PM 5×50	4 PCS
37-5.	M5 standard nut	4 PCS
37-6.	Φ 5×10×1.2 washer	4 PCS
38.	Square gasket	1 PCS
39.	Square connector	1 PCS
40.	Base	1 PCS
41.	Wheel	4 PCS
42.	Water tank	1 PCS
42-1.	1/1 outer teeth Φ6 pagoda through	1 PCS
42-2.	6×8 silicone tube	1 PCS
42-3.	1/1 inside teeth Φ10 pagoda through	1 PCS
42-4.	4-8×12 silicone tube	1 PCS
42-5.	Filter	1 PCS
42-6.	Water tank cover	1PCS
43.	Handle	1PCS

# Breakdown Drawing (1) of 60L/80L Carpet Cleaning Machine



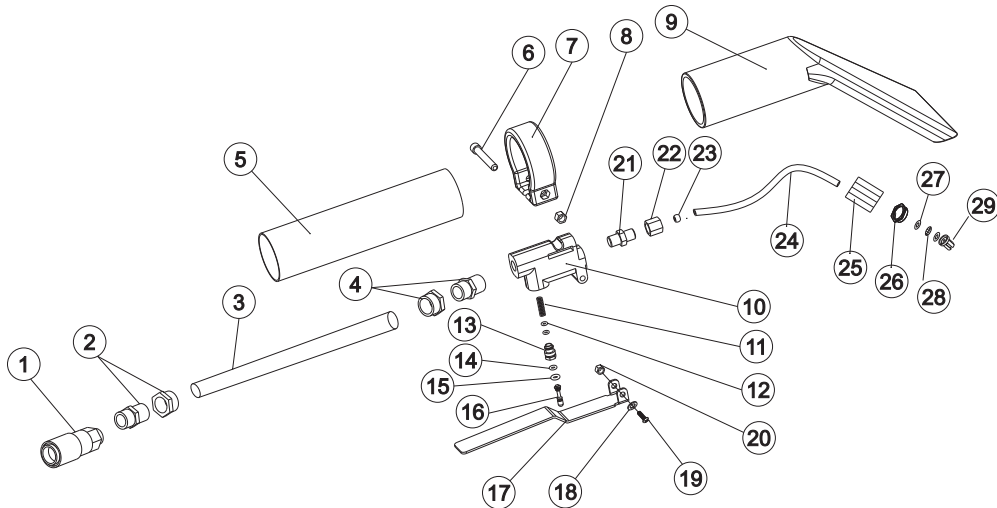
# Breakdown Drawing (2) of 60L/80L Carpet Cleaning Machine



## Breakdown Drawing (3) of LC Carpet Cleaning Machine – Hand-push Sucker (Small)

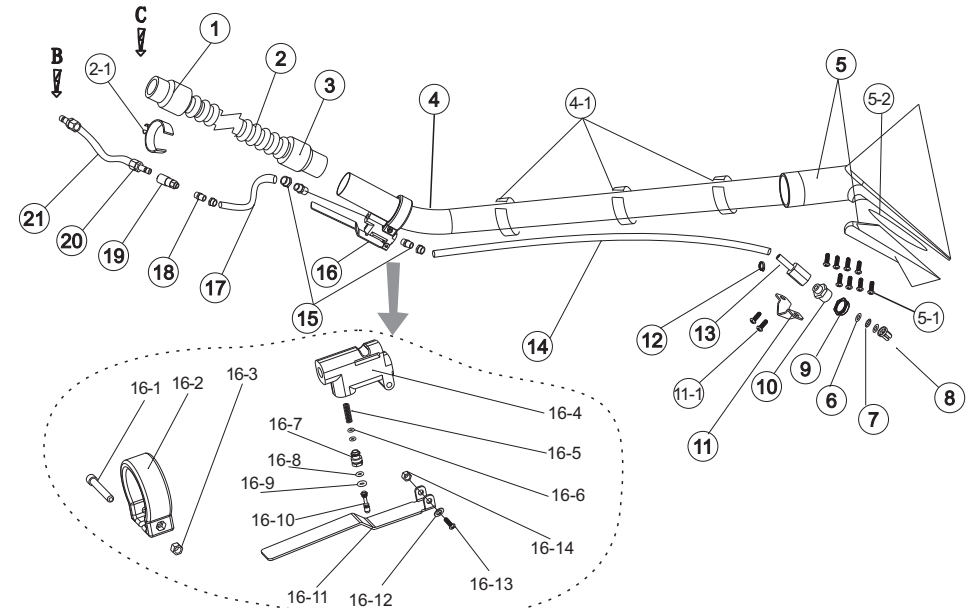
1	One-point quick coupling (female)	1PCS
2	One-point $\Phi 6$ inside tooth straightway	1PCS
3	$\Phi 4 \times 8$ Black rubber tube (12cm)	1Sets
4	One-point $\Phi 6$ outside tooth straightway	1PCS
5	Stainless steel pipe	1Sets
6	Steel Cm5 $\times$ 25	1Grains
7	Fixing ring of spray switch	1PCS
8	Steel M5 nut	1Grains
9	Plastic sucker	1PCS
10	Spray switch base	1PCS
11	Spray switch spring	1Sets
12	7 $\times$ 20 type ring	2PCS
13	Spray switch copper nut	1PCS
14	10 $\times$ 20 type ring	1PCS
15	12 $\times$ 20 type ring	1PCS
16	Spray switch copper insert stick	1PCS
17	Spray switch handle	1PCS
18	Steel $\Phi 4 \times 8 \times 1$ washer	1PCS
19	Lattice 3 $\times$ 3 $\times$ 20 $\times$ $\Phi 3.4$	1Grains

20	M3 self-locking nut	1Grains
21	Bolt for spray switch steel pipe	1 PCS
22	Nut for spray switch steel pipe	1PCS
23	Nut for spray switch steel pipe	1PCS
24	$\Phi 5$ steel pipe (bending)	1PCS
25	Installation joint for nozzle of small sucker	1Grains
26	$\Phi 12$ nut	1PCS
27	Sealant pad	2PCS
28	Filter	1PCS
29	Nozzle	1PCS



## Breakdown Drawing (3) of LC Carpet Cleaning Machine – Hand-push Sucker (Large)

1. $\Phi 40$ Connector A	1pcs	16-1. Steel CM5 $\times$ 25	1pcs
2. $\Phi 40$ Hose	1pcs	16-2. Fixing ring of spray switch	1pcs
3. $\Phi 40$ ConnectorB	1pcs	16-3. Steel M5 nut	1pcs
4. Steel pipe	1pcs	16-4. Spray switch base	1pcs
4-1. Hose clamp	4pcs	16-5. Spray switch spring	1pcs
5. Steel sucker	1pcs	16-6. 7 $\times$ 2 O type ring	2pcs
5-1. OM 4 $\times$ 10	8pcs	16-7. Spray switch copper nut	1pcs
5-2. Sealing strip for squeegee	1pcs	16-8. 10 $\times$ 2 O type ring	1pcs
6. Sealing pad	2pcs	16-9. 12 $\times$ 2 O type ring	1pcs
7. Filter	1pcs	16-10. Spray switch copper insert stick	1pcs
8. Nozzle	1pcs	16-11. Spray switch handle	1pcs
9. $\Phi 12$ nut	1 pcs	16-12. Steel $\Phi 4 \times 8 \times 1$ washer	1pcs
10. One-point $\Phi 12$ outside tooth straightway	1pcs	16-13. Lattice 3 $\times$ 3 $\times$ 20 $\times$ $\Phi 3.4$	1 pcs
11. Pressing plate	1 pcs	16-14. M3 self-locking nut	1pcs
11-1. PM 4 $\times$ 10	1 pcs	17. $\Phi 4 \times 8$ black hose (20cm)	1 pcs
12. $\Phi 7$ Hose clamp	1 pcs	18. One-point $\Phi 6$ inside tooth straightway	1pcs
13. One-point inside tooth copper joint	1pcs	19. One-point quick coupling(female)	1pcs
14. $\Phi 4 \times 8$ black hose(104cm)	1pcs	20. One-poiot quick coupling (male)	2pcs
15. One-point $\Phi 6$ outside tooth straightway	1pcs	21. $\Phi 4 \times 8$ black hose (2.7m)	1 pcs
16. Spray switch base assembly	1 pcs		



### Operation Instructions of Handle Sucker

1. Pull out the suction pipe behind the machine body; plug in the straight retractable hose of handle sucker;
2. Connect the quick coupling hose with the quick coupling below the machine body.