

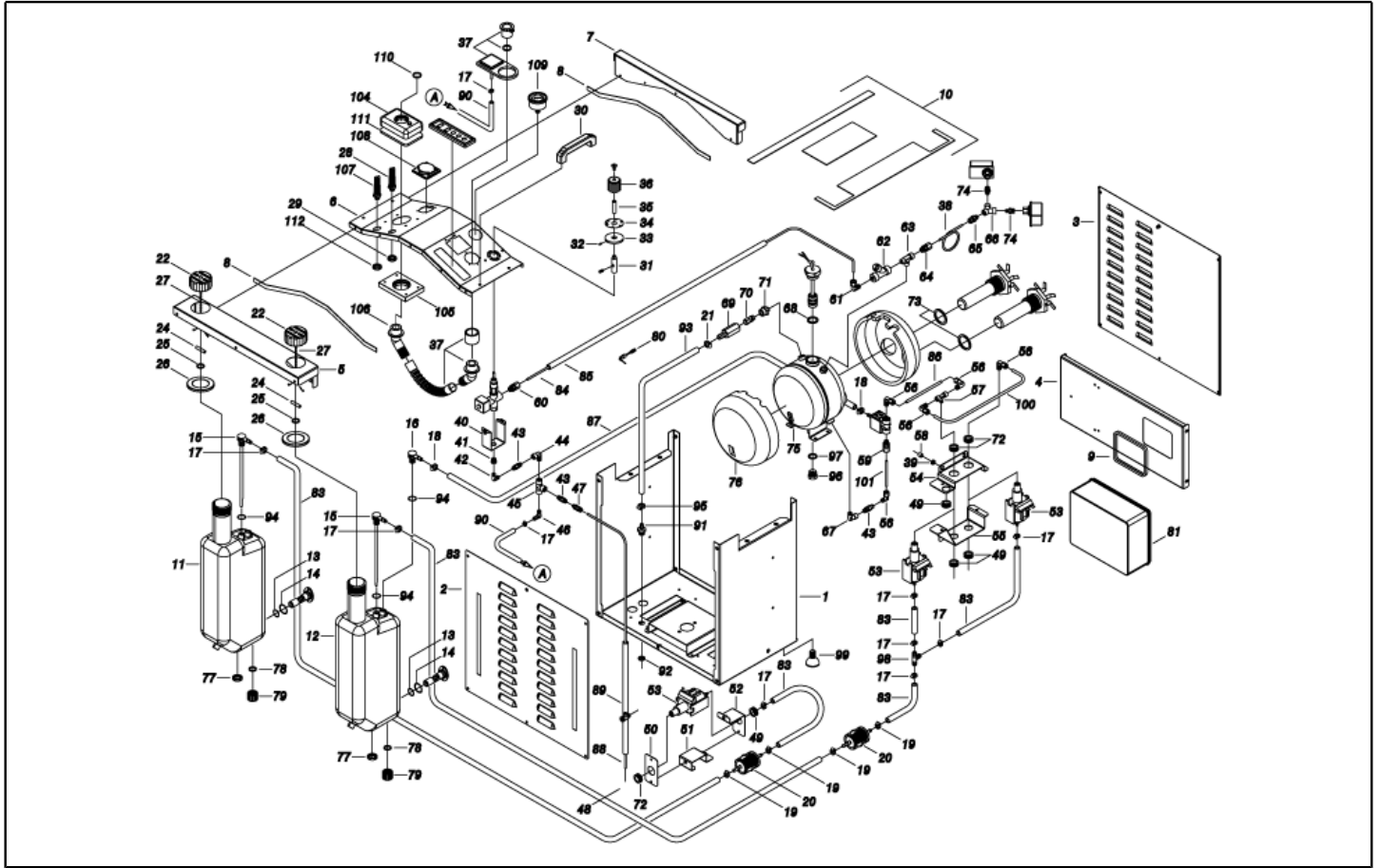


IPC

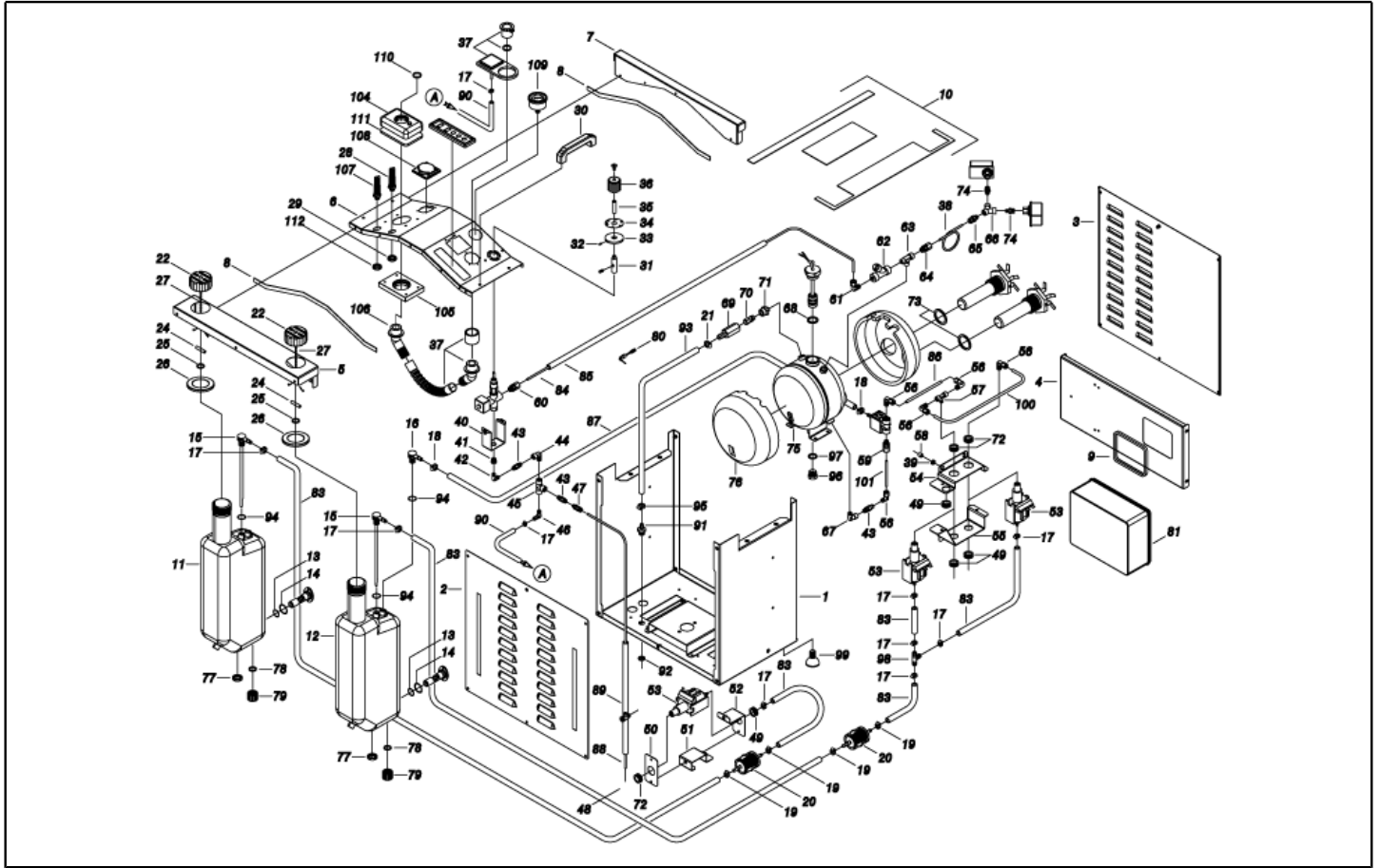
Spare parts list

Ref: GNVA40028

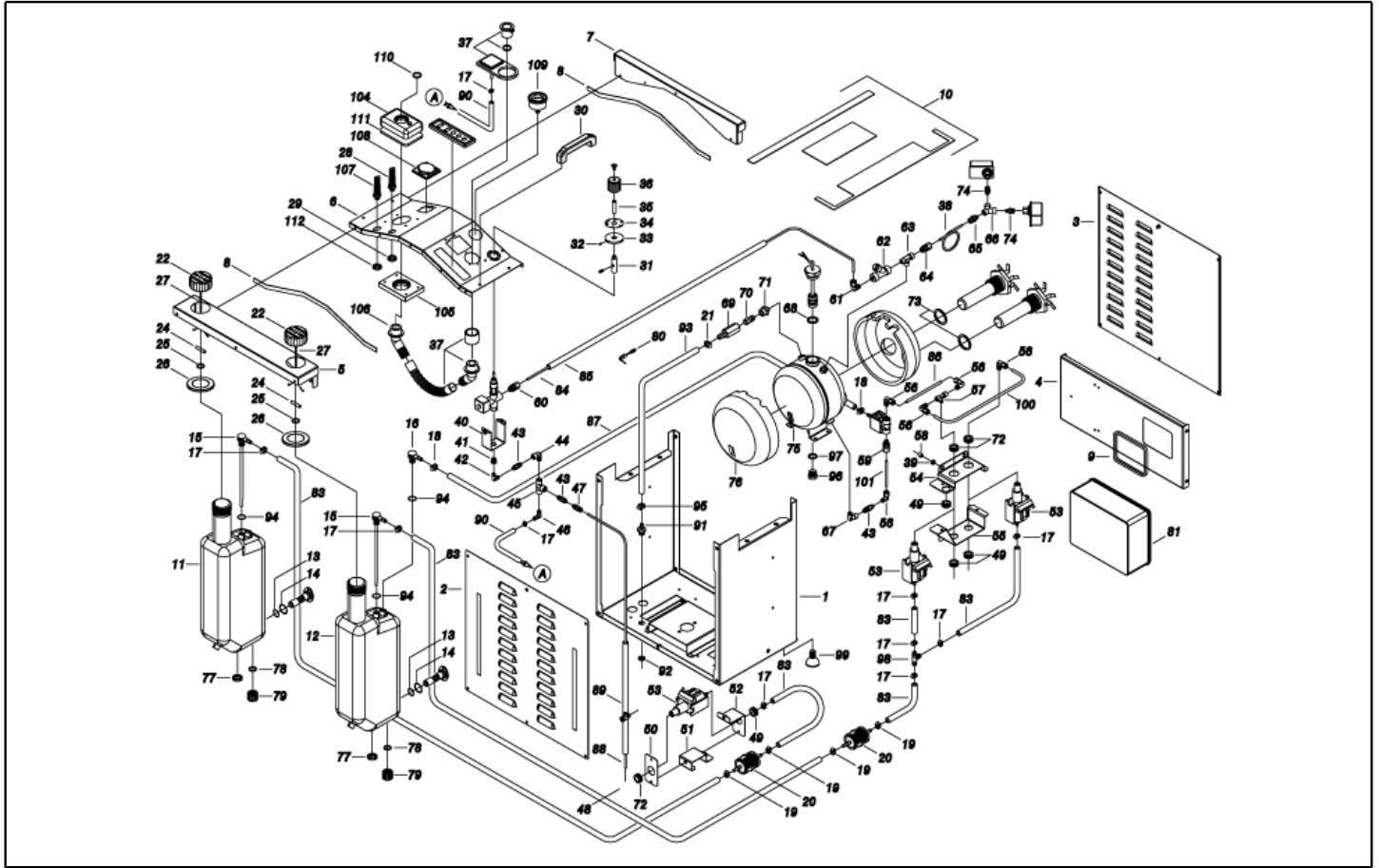
Model: STEAM GENERATOR SG-50 S 5014 T 400V IPC



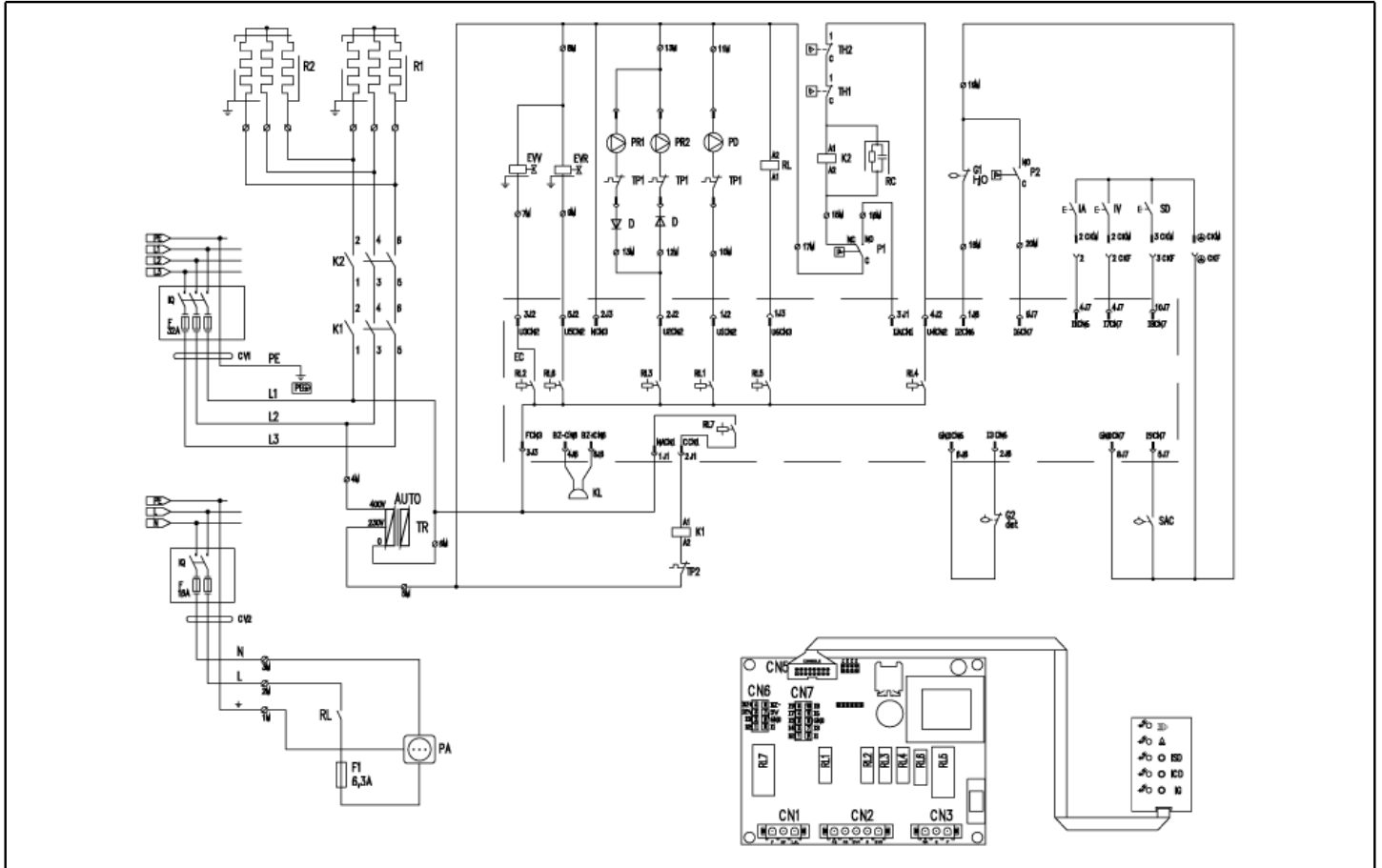
Ref. K	Part n.	Part n. 2	Description	Quantity	Validity		Price
					From	To	
0001	LAFN40670		FRAME STM SG-50/Tr. INX	1,00			--
0002	LAFN40627		ANT. PANEL STM SG-50 INX	1,00			--
0003	LAFN40626		BACK PANEL STM SG-50 INX	1,00			--
0004	LAFN40662		SUPPORT SC.EL. STM SG-50 2V.INX	1,00			--
0005	LAFN40642		FRONT COVER STM SG-50 IX	1,00			--
0006	LAFN40735		FRONT PANEL STM SG-50 Tr. INX	1,00			--
0007	LAFN40641		COVER POST. STM SG-50 IX	1,00			--
0008	GUGO00409		JOINT 15X3	1,10			--
0009	GUVR13437		EDGE H=10	0,30			--
0010	ITTE40004		PROTECTION ST-SV.50 N.1	1,00			--
0010	ITTE40005		PROTECTION ST-SV.50 N.2	1,00			--
0010	ITTE40006		PROTECTION ST-SV.50 N.3	1,00			--
0011	MPVR40594		WATER TANK STM SG-50 PE	1,00			--
0012	MPVR40618		WATER TANK STM SG-50 PE C/SC.	1,00			--
0013	GUGO01056		O-RING D. 18.72 X 2.62 NBR 70SH	2,00			--
0014	GUGO01197		O-RING D. 22.22 X 2.62 NBR 70SH	2,00			--
0015	RCDS20136		SUCTION L= 355 C.	1,00			--
0015	RCDS20136		SUCTION L= 355 C.	1,00			--
0016	RCDS20137		SUCTION BODY KSM	1,00			--
0017	FSVR00427		CLAMP D. 12 CLIC 66-110	3,00			--
0017	FSVR00427		CLAMP D. 12 CLIC 66-110	4,00			--
0017	FSVR00427		CLAMP D. 12 CLIC 66-110	3,00	11/04/2016		--
0017	FSVR40009		CLAMP D. 14 CLIC	4,00		10/04/2016	--
0018	FSVR72803		CLAMP D 9.3 - 9.9	2,00			--
0019	FSVR11197		CLAMP D.12.9-13.6	2,00			--
0020	FTCO40003		FUEL FILTER FB 7/TA 60mc NYL.	1,00		24/02/2016	--
0020	FTCO40004		FUEL FILTER FB 7/T 60mc NYL.	1,00	25/02/2016		--
0021	FSVR00430		CLAMP D. 16-24 86-205	1,00			--
0022	MPVR40611		TANK CAP MHDS-SK BK. C/F.	2,00			--
0024	LAFN40498		PIN D. 6 X 12-15 IX	2,00			--
0025	VTRS07728		WASHER D. 6 INX	2,00			--
0026	GUGO01657		GASKET H- 7 MM	0,21			--
0027	VTVR40026		SMALL CHAIN 13MG. INX L=220 G.V-MSC.	2,00			--
0028	MEVR61879		FAIR-LEAD PG 13.5 SP.	1,00			--
0029	MEVR87376		LOCKNUT PG 13	1,00			--
0030	MPVR89179		HANDLE RHRG C/F.PS BK.	2,00			--
0031	MPVR40219		PIN D. 15X33-38 PA66-FV	1,00			--
0032	VTVR40009		BUTTON GN615.3-M5-KN INX	1,00			--
0033	MPVR40218		DISC PVC D. 55 -15.5 ELETT.	1,00			--
0034	ETET40606		LABEL STEAM. SG-45 IPC	1,00			--
0035	MPVR45213		THICKNESS FC10	1,00			--
0036	MPVR45212		KNOB FC10	1,00			--
0037	MPVR40596		SOCKET AV PT CPL. SG-50	1,00			--
0038	LAFN40693		TUBE D. 6 STM SV-80 RM.	1,00			--



Ref. K	Part n.	Part n. 2	Description	Quantity	Validity		Price
					From	To	
0039	MEVR40136		FAIR-LEAD PWC D.18/10-12 H.7 BK	3,00			--
0040	LAFN40629		BRACKET STM SG-50 IX	1,00			--
0041	RCDS40191		SLEEVE 1/4-1/8 M/F D.2 OT.	1,00			--
0042	RCVR02549		ELBOW 1/8" M/M	1,00			--
0043	VVSF43855		VALVE 1/8M-F OT. VIT. 250°C PRT	1,00			--
0043	VVSF43855		VALVE 1/8M-F OT. VIT. 250°C PRT	1,00			--
0043	VVSF43855		VALVE 1/8M-F OT. VIT. 250°C PRT	1,00			--
0044	RCVR34780		ELBOW 1/8" M/F A10	1,00			--
0045	RCVR29339		CONNECTOR T 1/8 F/F/F A11 NIK	1,00			--
0046	RCVR89548		HOSE FITTING "L" 1/8M D.7 OT.NK	1,00			--
0047	RCVR14043		CONNECTOR DTT 1/8"M C1 D. 6/ 4 NIK	1,00			--
0048	RCVR40142		ADJUSTER D. 6 1/8M Ty.C	1,00			--
0049	MEVR89167		FAIR-LEAD D.32 C/FORO D.15.5 OVA	1,00			--
0049	MEVR89167		FAIR-LEAD D.32 C/FORO D.15.5 OVA	3,00			--
0050	LAFN40666		SUPPORT STM SG-50/H RC.ANT. IX.	1,00			--
0051	LAFN40668		SUPPORT STM SG-50/H RC.INF. IX.	1,00			--
0052	LAFN40667		SUPPORT STM SG-50/H RC.PST. IX.	1,00			--
0053	PPEL40002		PUMP BY-P.230V E 505/OT 1/8"F	2,00			--
0053	PPEL40002		PUMP BY-P.230V E 505/OT 1/8"F	1,00			--
0054	LAFN40664		SUPPORT STM SG-50 2V.SP. IX.	1,00			--
0055	LAFN40663		SUPPORT STM SG-50 2V.IF. IX.	1,00			--
0056	RCVR46461		BI-CONE CONNEC. L 1/8"M B5 D. 4/ 6 NIK	3,00			--
0056	RCVR46461		BI-CONE CONNEC. L 1/8"M B5 D. 4/ 6 NIK	1,00			--
0056	RCVR46461		BI-CONE CONNEC. L 1/8"M B5 D. 4/ 6 NIK	1,00			--
0057	RCVR41931		CONNECTOR T 1/8 F/M/F A12 NIK	1,00			--
0058	LAFN40671		SPACER D. 5.3-10 L= 6 OT.NK	3,00			--
0059	RCVR46851		BI-CONE CONNEC. DTT 1/8"F B2 D. 4/ 6 NIC	1,00			--
0060	RCVR17280		BI-CONE CONNEC. DTT 1/4"M B1 D. 6/ 8 NIC	1,00			--
0061	RCVR40136		BI-CONE CONNEC. L 1/4"M CN D.6/ 8 NIK	1,00			--
0062	FTAC89370		FILTER 1/4 F/F 2V.+1/8F-F.SC. OT	1,00			--
0063	RCVR89170		CONNECTOR T 1/4 F/M/M A18	1,00			--
0064	RCVR88289		BI-CONE CONNEC. DTT 1/4"M B1 D. 4/ 6 NIC	1,00			--
0065	RCVR46851		BI-CONE CONNEC. DTT 1/8"F B2 D. 4/ 6 NIC	1,00	01/06/2015		--
0066	RCVR28796		CONNECTOR Y 1/8 M/F/F	1,00	01/06/2015		--
0067	RCVR89171		ELBOW 1/4-1/8 M/F NIK	1,00			--
0068	GUGO47490		O-RING D. 28 X 5 HNBR 70SH	1,00			--
0069	RCDS40190		CAP SG-50 OT.	1,00			--
0070	VVSC40014		VALVE ITAL G 1/4M 8B. PED/IV VT	1,00	01/06/2015		--
0071	RCDS40189		BUSHING SG-50 OT.	1,00			--
0072	MEVR40137		FAIR-LEAD PWC D.33/23-28 H.8 BK	1,00			--
0072	MEVR40137		FAIR-LEAD PWC D.33/23-28 H.8 BK	2,00			--
0073	GUVR40019		GASKET D.40 X54 X2 PTFE	2,00			--
0074	RCVR03535		NIPPLE 1/4 - 1/8 CN	2,00	01/06/2015		--
0075	LAFN46625		BOILER STEAM.7140 INX 2V.	1,00			--



Ref. K	Part n.	Part n. 2	Description	Quantity	Validity		Price
					From	To	
0076	ITTE46933		PROTECTION STM.7140 2PZ.	1,00			--
0077	VTDD40014		NUT M24 INOX UNI 5589	2,00			--
0078	GUGO11489		GASKET D.22X1,5	2,00			--
0079	PVVR11806		DISCHARGE CAP FLL	2,00			--
0080	MEVR61924		FUSE-HOLDER MTA	1,00			--
0081	MEVR40148		BOX GER 240X190X95 SG.50T S	1,00			--
0083	TBCO06945		L.P. HOSE D. 6-12 10BAR C.PRESS	0,20			--
0083	TBCO06945		L.P. HOSE D. 6-12 10BAR C.PRESS	0,50			--
0083	TBCO06945		L.P. HOSE D. 6-12 10BAR C.PRESS	0,08			--
0083	TBCO06945		L.P. HOSE D. 6-12 10BAR C.PRESS	0,13			--
0084	LAFN40689		TUBE D.8 STM SV-80 RM.	1,00			--
0085	MEVR01654		SHEATH D. 10 STERLING YL.	0,48			--
0086	LAFN40690		TUBE D. 6 STM SG.80 RM.	1,00			--
0087	TBBP89815		L.P. HOSE D. 4- 8,5 SILIC. NT.	0,22			--
0088	TBBP43611		L.P. HOSE D. 4- 6 TEFLON	0,35			--
0089	TBBP07631		L.P. HOSE D.10-14	0,32			--
0090	TBBP40099		TUBE EPDM-AT 5-11 200°C 10BAR	0,35	11/04/2016		--
0090	TBCO15363		L.P. HOSE 6.4-12 MAN. 170° TR.BLU	0,35		10/04/2016	--
0091	RCDS85485		HOSE FITTING 3/8 M D. 12	1,00			--
0092	RCDS40105		LOCKNUT G 3/8 ES.19 SP.4 OT	1,00			--
0093	TBBP40080		L.P. HOSE D.12.7-20 20 B. 100C.	0,65			--
0094	GUGO28327		O-RING D. 7.51 X 3.53 NBR 70SH	1,00			--
0094	GUGO28327		O-RING D. 7.51 X 3.53 NBR 70SH	1,00			--
0094	GUGO28327		O-RING D. 7.51 X 3.53 NBR 70SH	2,00			--
0095	FSVR17154		CLAMP D. 13-20	1,00			--
0096	RCDS40193		CAP 1/2 M STM/SV.50 OT.	1,00			--
0097	GUGO46462		O-RING D. 18.72 X 2.62 SIL.70SH	1,00			--
0098	RCVR40144		HOSE FITTING "T" D. 6 NYL TR6	1,00			--
0099	ABGO34061		VIBRATION DAMP. CL.25X17- 1M6X12 60SH NBR	4,00			--
0100	LAFN40692		TUBE D. 6 STM SG.80 RM. N.2	1,00			--
0101	LAFN40691		TUBE D. 6 STM SG.80 RM. N.1	1,00			--
0104	MPVR72109		PIPE UNION MIR. 99	1,00			--
0105	MPVR40602		FLANGE ASP. SG-50 PVC	1,00			--
0106	RCVR40132		CONNECTOR D.35 X1.1/4" PP	1,00			--
0107	MEVR71668		CABLE CLAMP	1,00			--
0108	MEVR40000		SOCKET CS-023-K 2P+T 230-16 IP54	1,00			--
0109	MNMN40013		PRESSURE GAUGE 0- 10 1500-1/4M D.40	1,00			--
0110	GUGO28701		GASKET MIR. D. 38	1,00			--
0111	GUGO37409		GASKET MIR. P.	1,00			--
0112	MEVR87377		LOCKNUT PG 16 BK	1,00			--



Ref. K	Part n.	Part n. 2	Description	Quantity	Validity		Price
					From	To	
F	MEVR30418		FUSE 5X20 6.3A	1,00			--
EC	MECE40033		PCB STEAM.JT. C/CM.DGT.SG.50S	1,00			--
IG	MERL40000		SWITCH RELAY OMR G2R-1-T 240V AC	1,00			--
KL	MECB40136		BUZZER D.32 KPEG260 3-28V CBL.	1,00			--
TR	METR40017		AUTOTRANSFORMER 200 VA 230-400 V M 5/60Hz	1,00			--
CV1	MECB40146		CABLE H07 RNF 4X2.5 L=6.800	1,00	01/04/2016		--
CV1	MECB89888		CABLE H07 RNF 4X2.5 L=6.500	1,00		31/03/2016	--
CV2	MECB21515		CABLE H07 RNF 3X1.5 L=6.500	1,00			--
CV3	MECB40267		CABLE FLAT 16V. L= 750	1,00			--
EC1	MECE40009		BOARD COM. C/SCH.F078_0 CP.	1,00			--
EVR	MEEV43661		ELECTROVALVE OLB 3V.1/8M/F+PG.7 D.2.8	1,00			--
EVV	MEEV40002		SOLENOID VALVE OLB 2V.1/4F 90°-R.250°+M3	1,00			--
SAC	MECI43618		SWITCH REED G1" M 180°C L= 100	1,00			--
TP1	METK43603		KLIKSON UP62 110°C	2,00			--
TP1	METK43603		KLIKSON UP62 110°C	1,00			--
TP2	METK43620		THERMOSTAT 250°C RIP. NC CER.16A 250	1,00			--
G1,2	MECI40006		SENSOR LEVEL S1 PML.XD.FPJ.FST.	2,00			--
K1,2	METT40012		CONTACTOR SIE 3RT 2017-1AP01 230V	2,00			--
P1,2	MEPF40028		PRESSURE SWITCH 1/4F B01DR1 4-15BAR CP	2,00	01/06/2015		--
R1,2	MEVR88615		RESISTANCE 43 OHM 3.6KW T 23/400V 2V	2,00			--
TH12	METK40992		THERMOSTAT 245°C TR2 15(2.5)A 250V	2,00			--